

# Production Worksheet

Wilcom EmbroideryStudio - Designing



Design: **3**

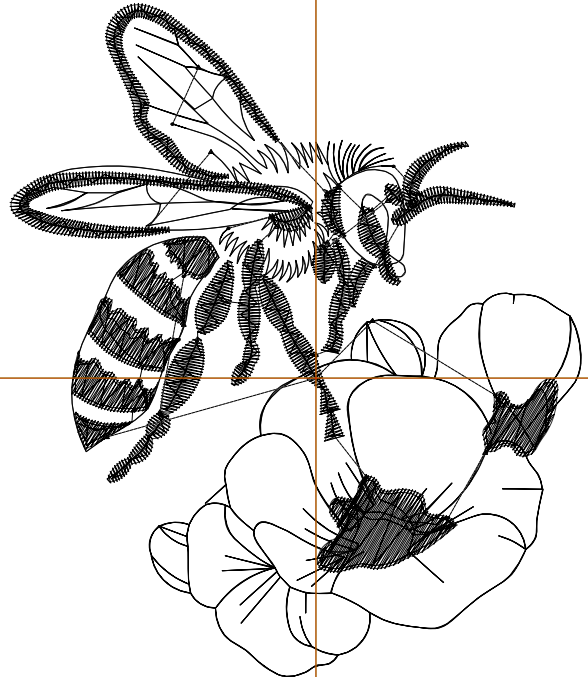
Title:

Stitches: 4,667  
 Height: 3.51 in  
 Width: 2.97 in  
 Colors: 1  
 Colorway: Colorway 1  
 Zoom: 1:1

Machine format: Tajima  
 Color changes: 0  
 Stops: 1  
 Trims: 18  
 Appliqués: 0  
 Left: 40.5 mm  
 Right: 35.0 mm  
 Up: 49.6 mm  
 Down: 39.5 mm  
 EndX: 0.00 in  
 EndY: 0.00 in  
 Area: 10.42 in<sup>2</sup>  
 Max stitch: 5.0 mm  
 Min stitch: 0.1 mm  
 Max jump: 6.9 mm  
 Total thread: 68.53ft  
 Total bobbin: 22.27ft

Stop Sequence:

#	N#	Color	St.	Code	Name	Chart
1.	8	█	4,665	8	Black	Default



# Production Worksheet

Wilcom EmbroideryStudio - Designing



Design: **4**

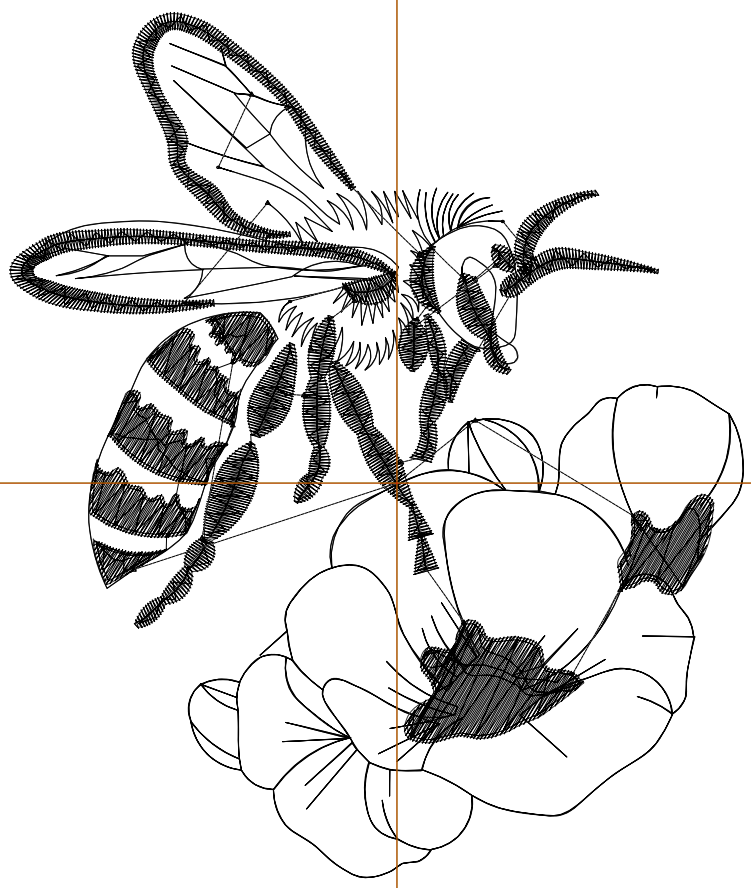
Title:

Stitches: 6,016  
 Height: 4.51 in  
 Width: 3.82 in  
 Colors: 1  
 Colorway: Colorway 1  
 Zoom: 1:1

Machine format: Tajima  
 Color changes: 0  
 Stops: 1  
 Trims: 20  
 Appliqués: 0  
 Left: 51.3 mm  
 Right: 45.8 mm  
 Up: 62.3 mm  
 Down: 52.2 mm  
 EndX: 0.00 in  
 EndY: 0.00 in  
 Area: 17.23 in<sup>2</sup>  
 Max stitch: 5.8 mm  
 Min stitch: 0.1 mm  
 Max jump: 7.0 mm  
 Total thread: 96.62ft  
 Total bobbin: 33.67ft

Stop Sequence:

#	N#	Color	St.	Code	Name	Chart
1.	8	█	6,014	8	Black	Default



# Production Worksheet

Wilcom EmbroideryStudio - Designing



Design: **5**

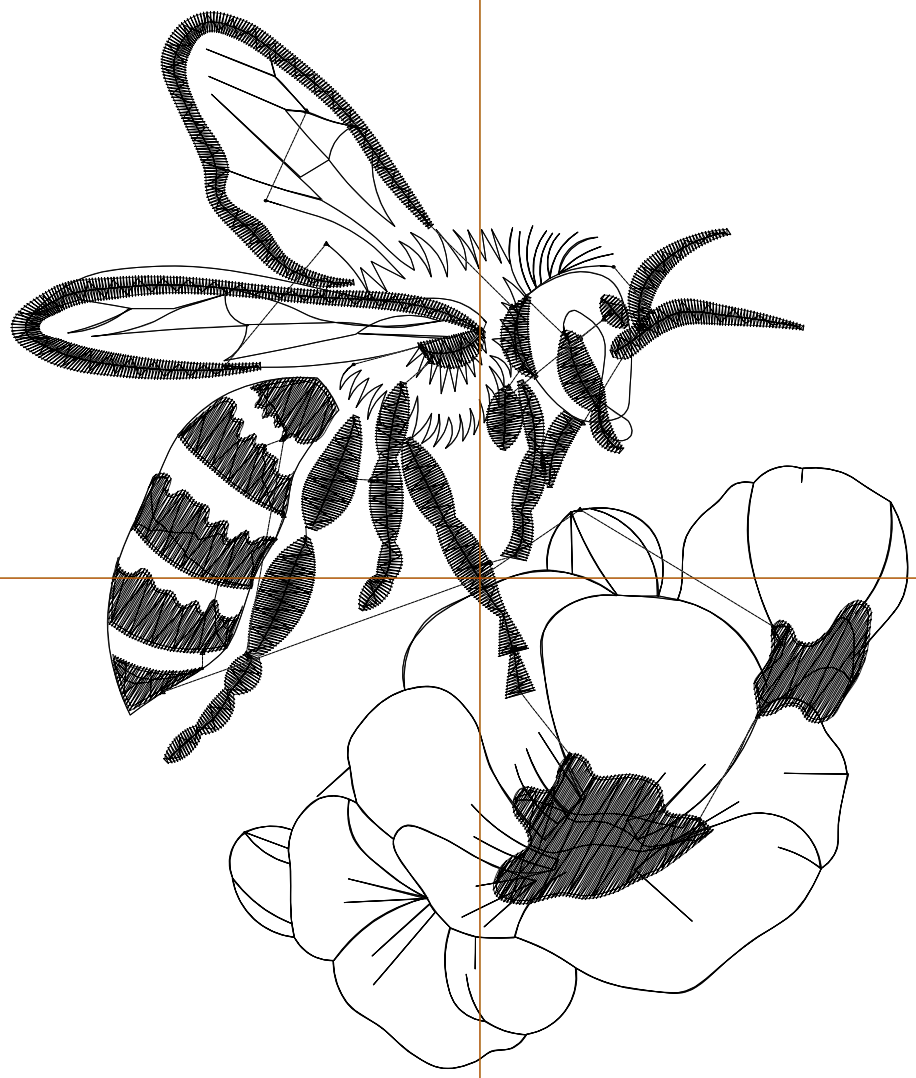
Title:

Stitches: 7,488  
 Height: 5.50 in  
 Width: 4.67 in  
 Colors: 1  
 Colorway: Colorway 1  
 Zoom: 1:1

Machine format: Tajima  
 Color changes: 0  
 Stops: 1  
 Trims: 22  
 Appliqués: 0  
 Left: 62.1 mm  
 Right: 56.6 mm  
 Up: 75.0 mm  
 Down: 64.8 mm  
 EndX: 0.00 in  
 EndY: 0.00 in  
 Area: 25.71 in<sup>2</sup>  
 Max stitch: 6.7 mm  
 Min stitch: 0.2 mm  
 Max jump: 7.0 mm  
 Total thread: 129.60ft  
 Total bobbin: 47.49ft

Stop Sequence:

#	N#	Color	St.	Code	Name	Chart
1.	8	█	7,486	8	Black	Default



# Production Worksheet

Wilcom EmbroideryStudio - Designing



Design: **6**

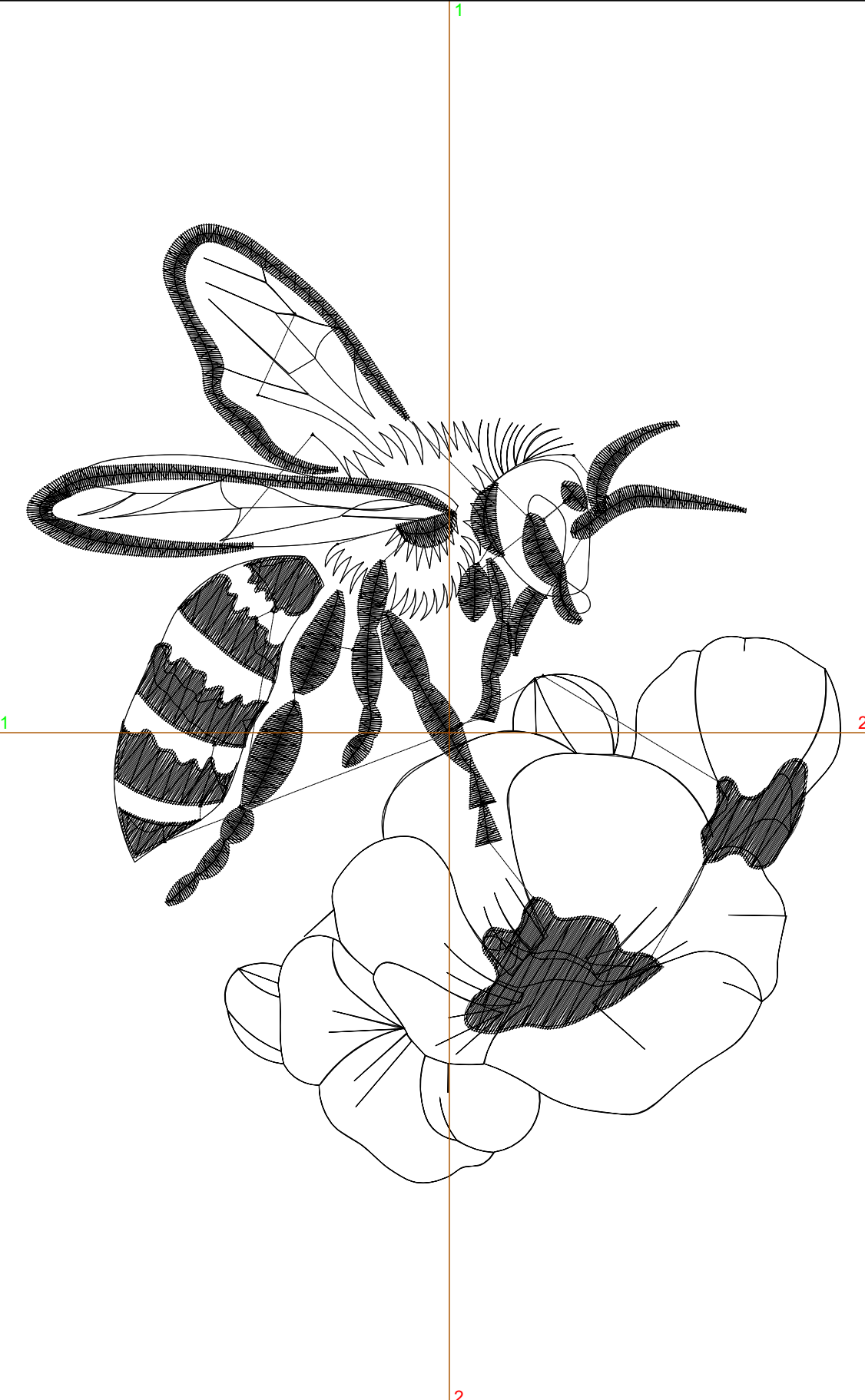
Title:

Stitches: 9,068  
 Height: 6.51 in  
 Width: 5.52 in  
 Colors: 1  
 Colorway: Colorway 1  
 Zoom: 1:1

Machine format: Tajima  
 Color changes: 0  
 Stops: 1  
 Trims: 24  
 Appliqués: 0  
 Left: 72.8 mm  
 Right: 67.4 mm  
 Up: 87.7 mm  
 Down: 77.6 mm  
 EndX: 0.00 in  
 EndY: 0.00 in  
 Area: 35.91 in<sup>2</sup>  
 Max stitch: 7.9 mm  
 Min stitch: 0.2 mm  
 Max jump: 6.7 mm  
 Total thread: 167.74ft  
 Total bobbin: 63.95ft

Stop Sequence:

#	N#	Color	St.	Code	Name	Chart
1.	8	█	9,066	8	Black	Default



# Production Worksheet

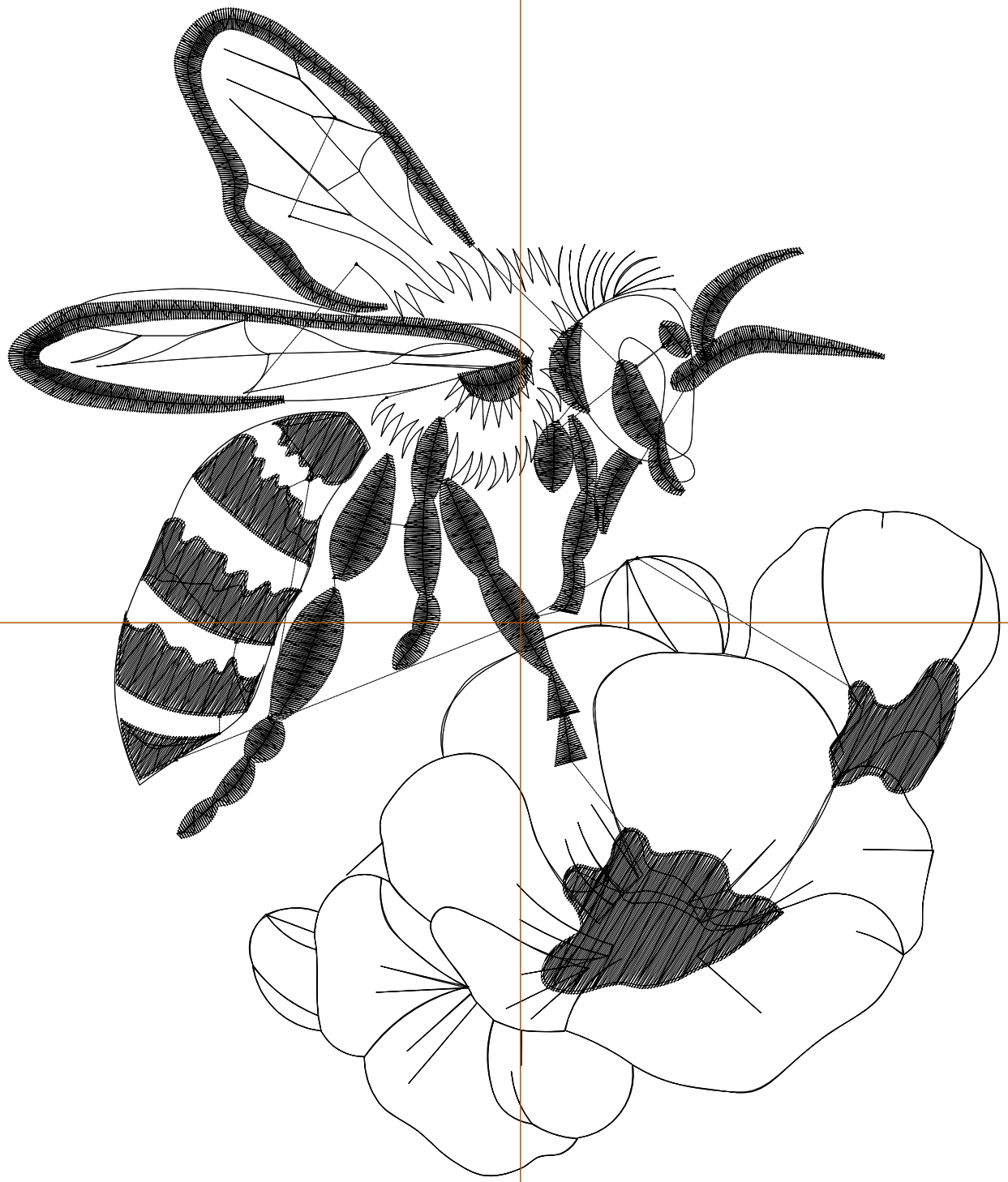
Wilcom EmbroideryStudio - Designing



Design: **7**

Title:

Stitches: 10,725  
Height: 7.51 in  
Width: 6.37 in  
Colors: 1  
Colorway: Colorway 1  
Zoom: 1:1



# Production Worksheet

Wilcom EmbroideryStudio - Designing



Design: **7**

Title:

Stitches: 10,725  
Height: 7.51 in  
Width: 6.37 in  
Colors: 1  
Colorway: Colorway 1  
Zoom: 1:1

Machine format: Tajima  
Color changes: 0  
Stops: 1  
Trims: 24  
Appliqués: 0  
Left: 83.6 mm  
Right: 78.1 mm  
Up: 100.4 mm  
Down: 90.3 mm  
EndX: 0.00 in  
EndY: 0.00 in  
Area 47.79 in<sup>2</sup>  
Max stitch: 9.0 mm  
Min stitch: 0.2 mm  
Max jump: 7.0 mm  
Total thread: 211.03ft  
Total bobbin: 83.16ft

Stop Sequence:

#	N#	Color	St.	Code	Name	Chart
1.	8	█	10,723	8	Black	Default