

Production Worksheet

Wilcom EmbroideryStudio - Designing



Design: **3**

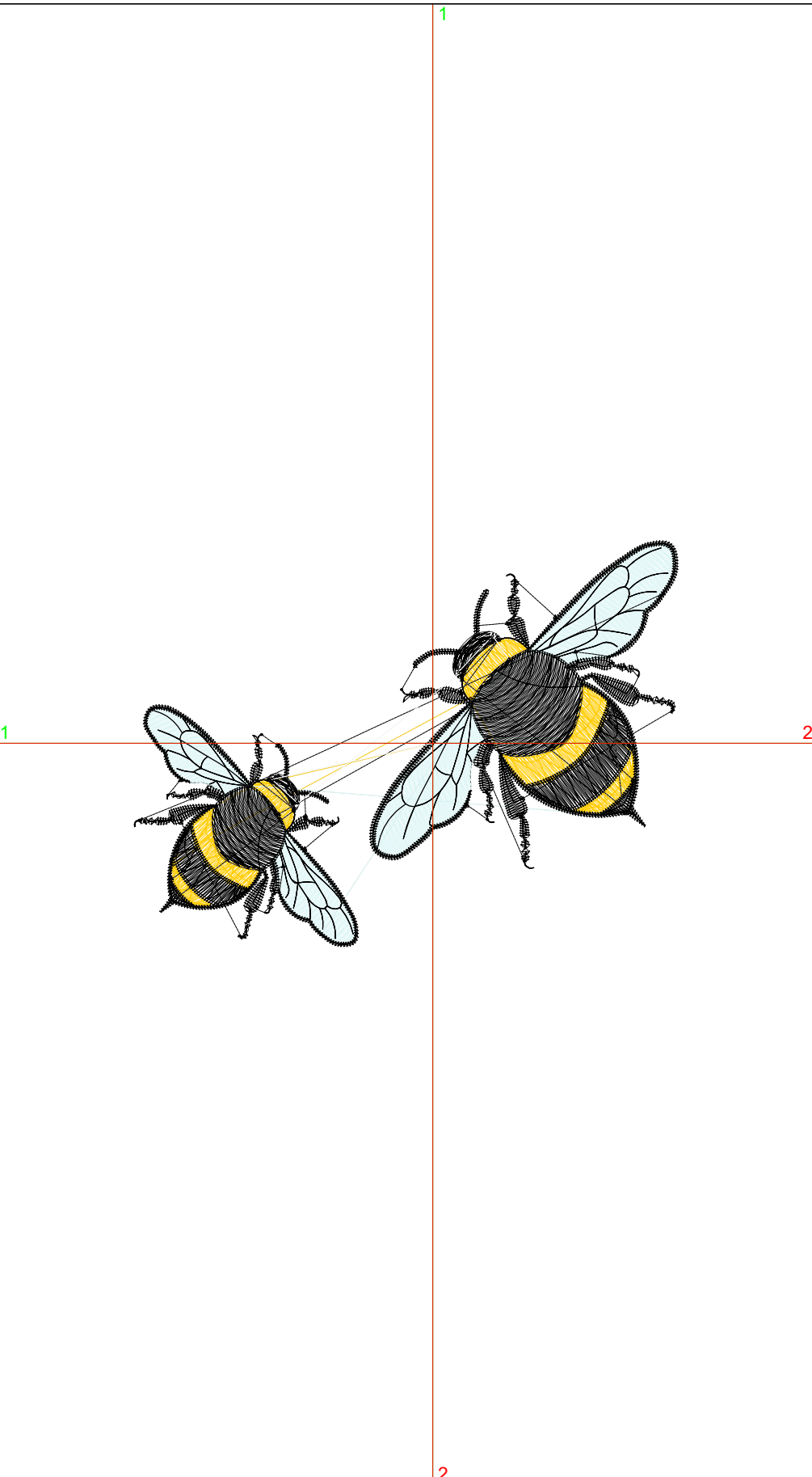
Title:

Stitches: 9,293
 Height: 2.62 in
 Width: 3.50 in
 Colors: 4
 Colorway: Colorway 1
 Zoom: 1:1

Machine format: Tajima
 Color changes: 3
 Stops: 4
 Trims: 42
 Appliqués: 0
 Left: 48.8 mm
 Right: 40.2 mm
 Up: 33.2 mm
 Down: 33.3 mm
 EndX: 0.00 in
 EndY: 0.00 in
 Area 9.17 in²
 Max stitch: 7.0 mm
 Min stitch: 0.0 mm
 Max jump: 7.0 mm
 Total thread: 125.08ft
 Total bobbin: 37.21ft

Stop Sequence:

#	N#	Color	St.	Code	Name	Chart
1.	2		1,147		R255 G206 B12	
2.	1		2,145		R219 G245 B245	
3.	8		5,942	8	Black	Default
4.	9		57	9	White	Default



Production Worksheet

Wilcom EmbroideryStudio - Designing



Design: **4**

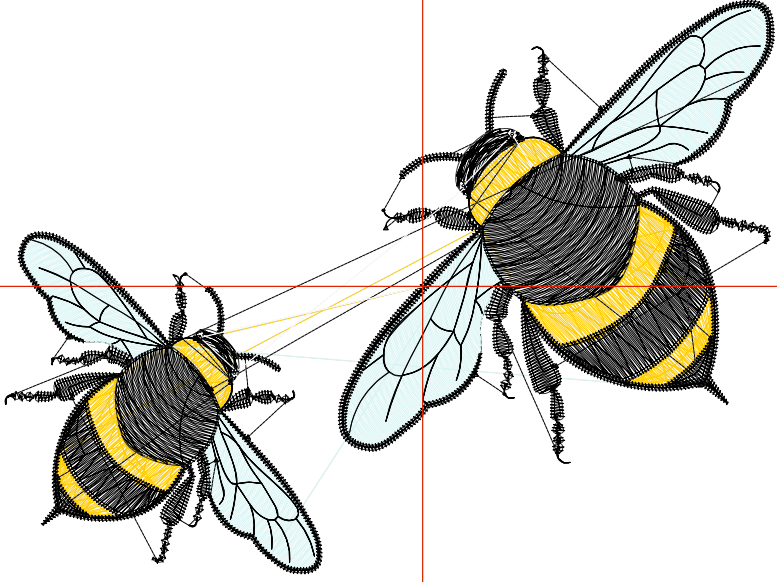
Title:

Stitches: 10,909
 Height: 2.99 in
 Width: 4.00 in
 Colors: 4
 Colorway: Colorway 1
 Zoom: 1:1

Machine format: Tajima
 Color changes: 3
 Stops: 4
 Trims: 43
 Appliqués: 0
 Left: 55.2 mm
 Right: 46.5 mm
 Up: 37.9 mm
 Down: 38.0 mm
 EndX: 0.00 in
 EndY: 0.00 in
 Area: 11.97 in²
 Max stitch: 7.0 mm
 Min stitch: 0.0 mm
 Max jump: 7.0 mm
 Total thread: 151.84ft
 Total bobbin: 46.79ft

Stop Sequence:

#	N#	Color	St.	Code	Name	Chart
1.	2		1,313		R255 G206 B12	
2.	1		2,671		R219 G245 B245	
3.	8		6,854	8	Black	Default
4.	9		69	9	White	Default



Production Worksheet

Wilcom EmbroideryStudio - Designing



Design: **4**

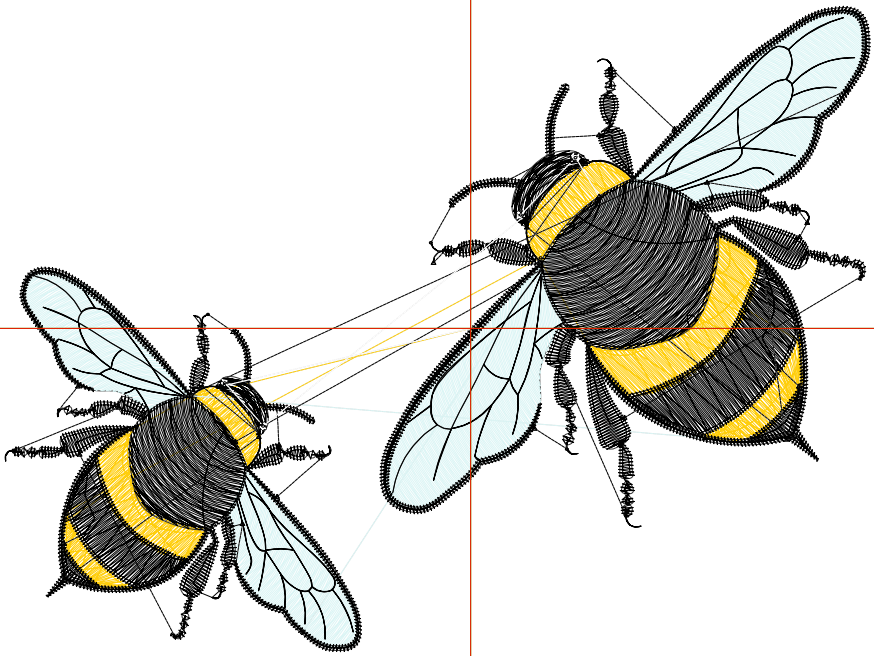
Title:

Stitches: 12,678
Height: 3.36 in
Width: 4.50 in
Colors: 4
Colorway: Colorway 1
Zoom: 1:1

Machine format: Tajima
Color changes: 3
Stops: 4
Trims: 45
Appliqués: 0
Left: 61.5 mm
Right: 52.9 mm
Up: 42.6 mm
Down: 42.8 mm
EndX: 0.00 in
EndY: 0.00 in
Area 15.14 in²
Max stitch: 7.0 mm
Min stitch: 0.0 mm
Max jump: 7.0 mm
Total thread: 181.50ft
Total bobbin: 57.48ft

Stop Sequence:

#	N#	Color	St.	Code	Name	Chart
1.	2		1,508		R255 G206 B12	
2.	1		3,209		R219 G245 B245	
3.	8		7,890	8	Black	Default
4.	9		69	9	White	Default



Production Worksheet

Wilcom EmbroideryStudio - Designing



Design: **5**

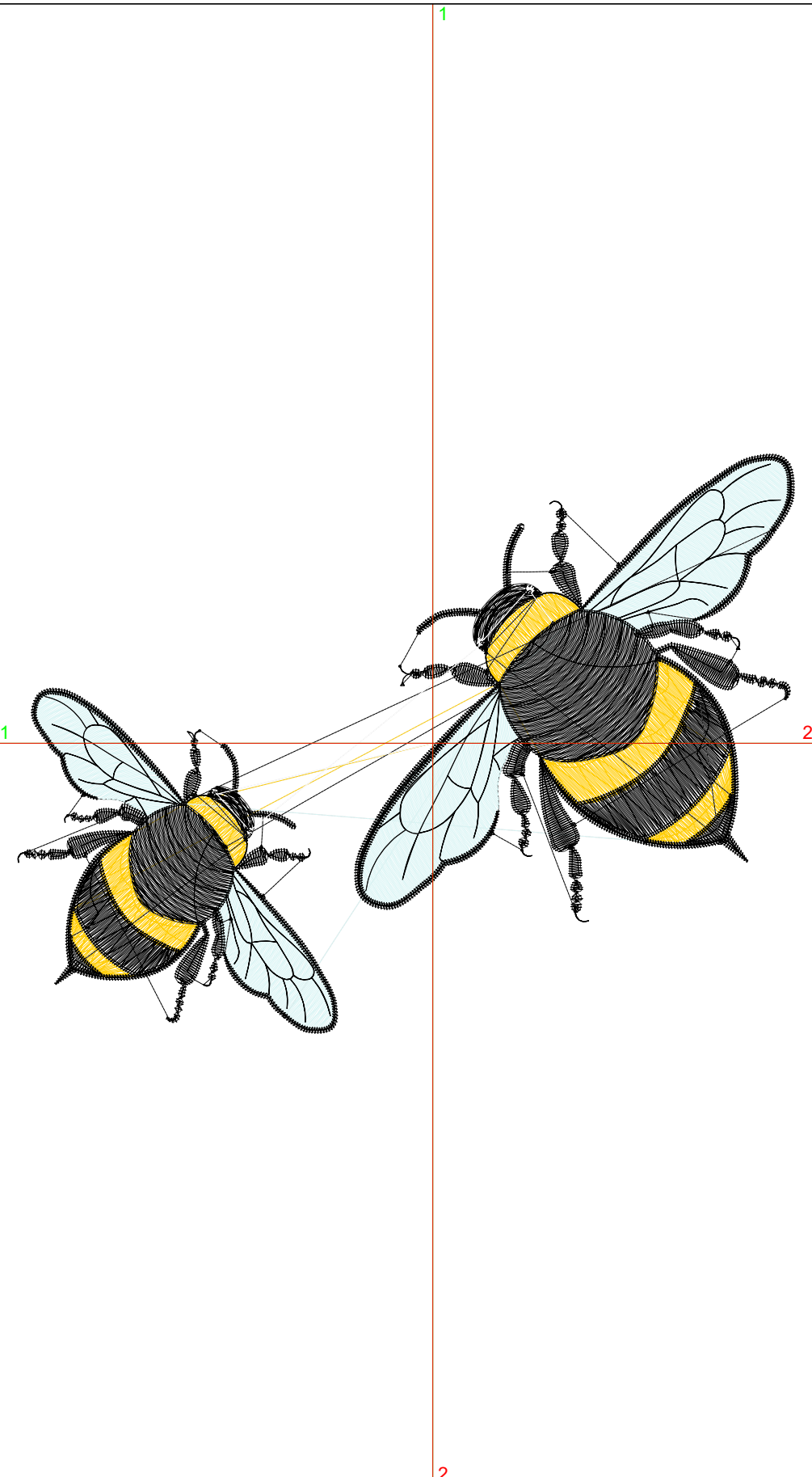
Title:

Stitches: 14,608
 Height: 3.73 in
 Width: 5.00 in
 Colors: 4
 Colorway: Colorway 1
 Zoom: 1:1

Machine format: Tajima
 Color changes: 3
 Stops: 4
 Trims: 45
 Appliqués: 0
 Left: 67.9 mm
 Right: 59.2 mm
 Up: 47.4 mm
 Down: 47.5 mm
 EndX: 0.00 in
 EndY: 0.00 in
 Area: 18.69 in²
 Max stitch: 7.8 mm
 Min stitch: 0.0 mm
 Max jump: 7.0 mm
 Total thread: 214.26ft
 Total bobbin: 69.39ft

Stop Sequence:

#	N#	Color	St.	Code	Name	Chart
1.	2		1,732		R255 G206 B12	
2.	1		3,852		R219 G245 B245	
3.	8		8,934	8	Black	Default
4.	9		88	9	White	Default



Production Worksheet

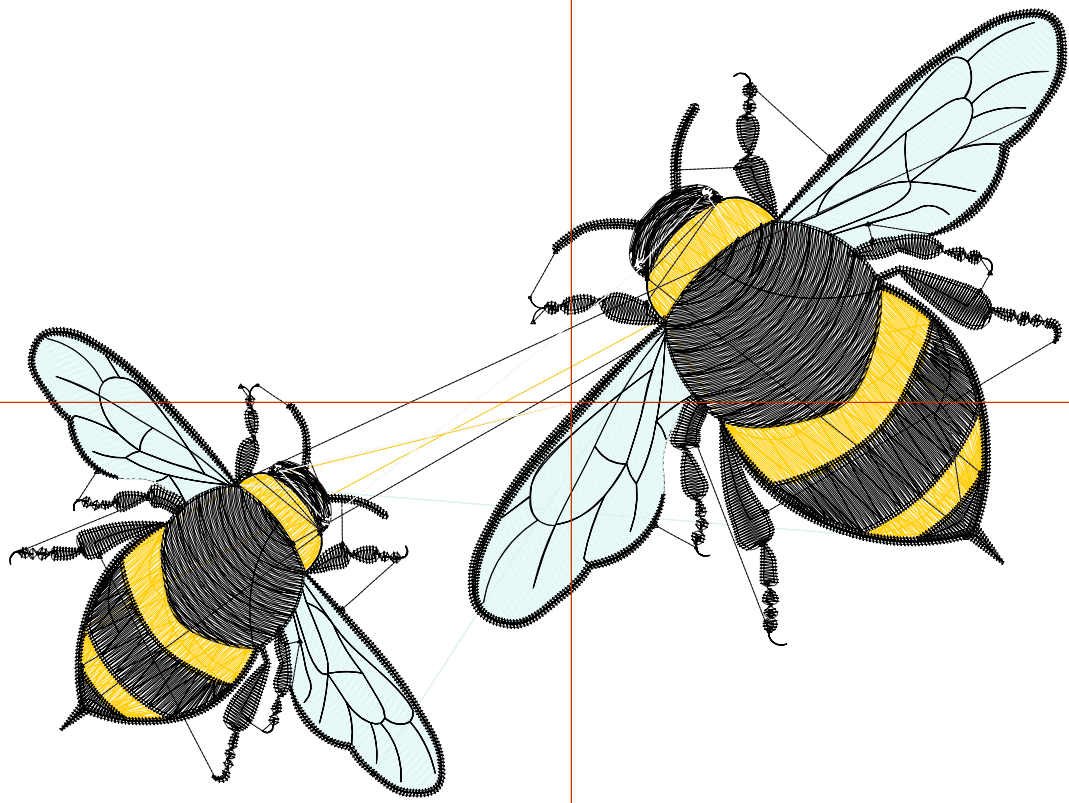
Wilcom EmbroideryStudio - Designing



Design: **5**

Title:

Stitches: 16,753
Height: 4.11 in
Width: 5.50 in
Colors: 4
Colorway: Colorway 1
Zoom: 1:1



Production Worksheet

Wilcom EmbroideryStudio - Designing



Design: **5**

Title:

Stitches: 16,753
 Height: 4.11 in
 Width: 5.50 in
 Colors: 4
 Colorway: Colorway 1
 Zoom: 1:1

Machine format: Tajima
 Color changes: 3
 Stops: 4
 Trims: 47
 Appliqués: 0
 Left: 74.2 mm
 Right: 65.6 mm
 Up: 52.1 mm
 Down: 52.2 mm
 EndX: 0.00 in
 EndY: 0.00 in
 Area 22.61 in²
 Max stitch: 7.0 mm
 Min stitch: 0.0 mm
 Max jump: 7.0 mm
 Total thread: 250.30ft
 Total bobbin: 82.40ft

Stop Sequence:

#	N#	Color	St.	Code	Name	Chart
1.	2		1,981		R255 G206 B12	
2.	1		4,576		R219 G245 B245	
3.	8		10,101	8	Black	Default
4.	9		93	9	White	Default

Production Worksheet

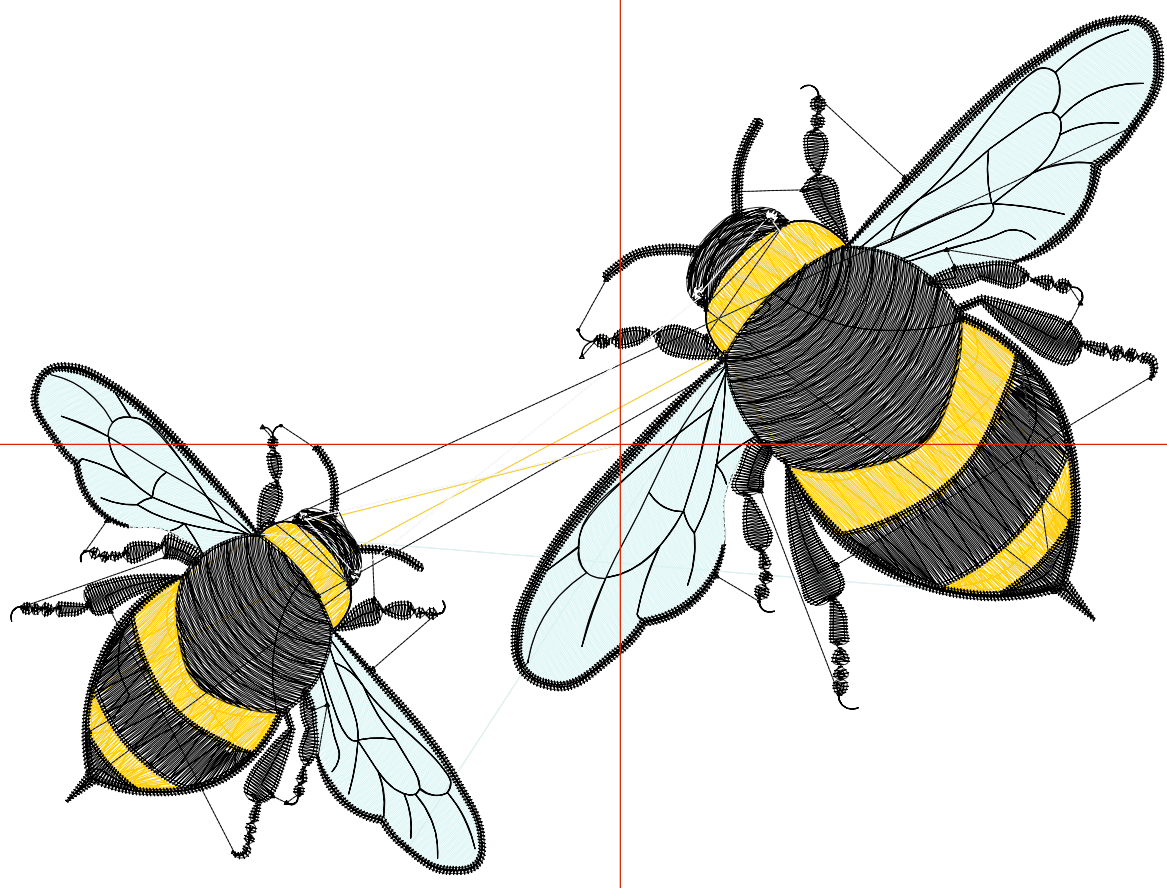
Wilcom EmbroideryStudio - Designing



Design: **6**

Title:

Stitches: 18,919
Height: 4.48 in
Width: 6.01 in
Colors: 4
Colorway: Colorway 1
Zoom: 1:1



Production Worksheet

Wilcom EmbroideryStudio - Designing



Design: **6**

Title:

Stitches: 18,919
 Height: 4.48 in
 Width: 6.01 in
 Colors: 4
 Colorway: Colorway 1
 Zoom: 1:1

Machine format: Tajima
 Color changes: 3
 Stops: 4
 Trims: 49
 Appliqués: 0
 Left: 80.6 mm
 Right: 71.9 mm
 Up: 56.8 mm
 Down: 56.9 mm
 EndX: 0.00 in
 EndY: 0.00 in
 Area 26.89 in²
 Max stitch: 7.0 mm
 Min stitch: 0.1 mm
 Max jump: 7.0 mm
 Total thread: 288.28ft
 Total bobbin: 96.49ft

Stop Sequence:

#	N#	Color	St.	Code	Name	Chart
1.	2		2,199		R255 G206 B12	
2.	1		5,330		R219 G245 B245	
3.	8		11,294	8	Black	Default
4.	9		94	9	White	Default

Production Worksheet

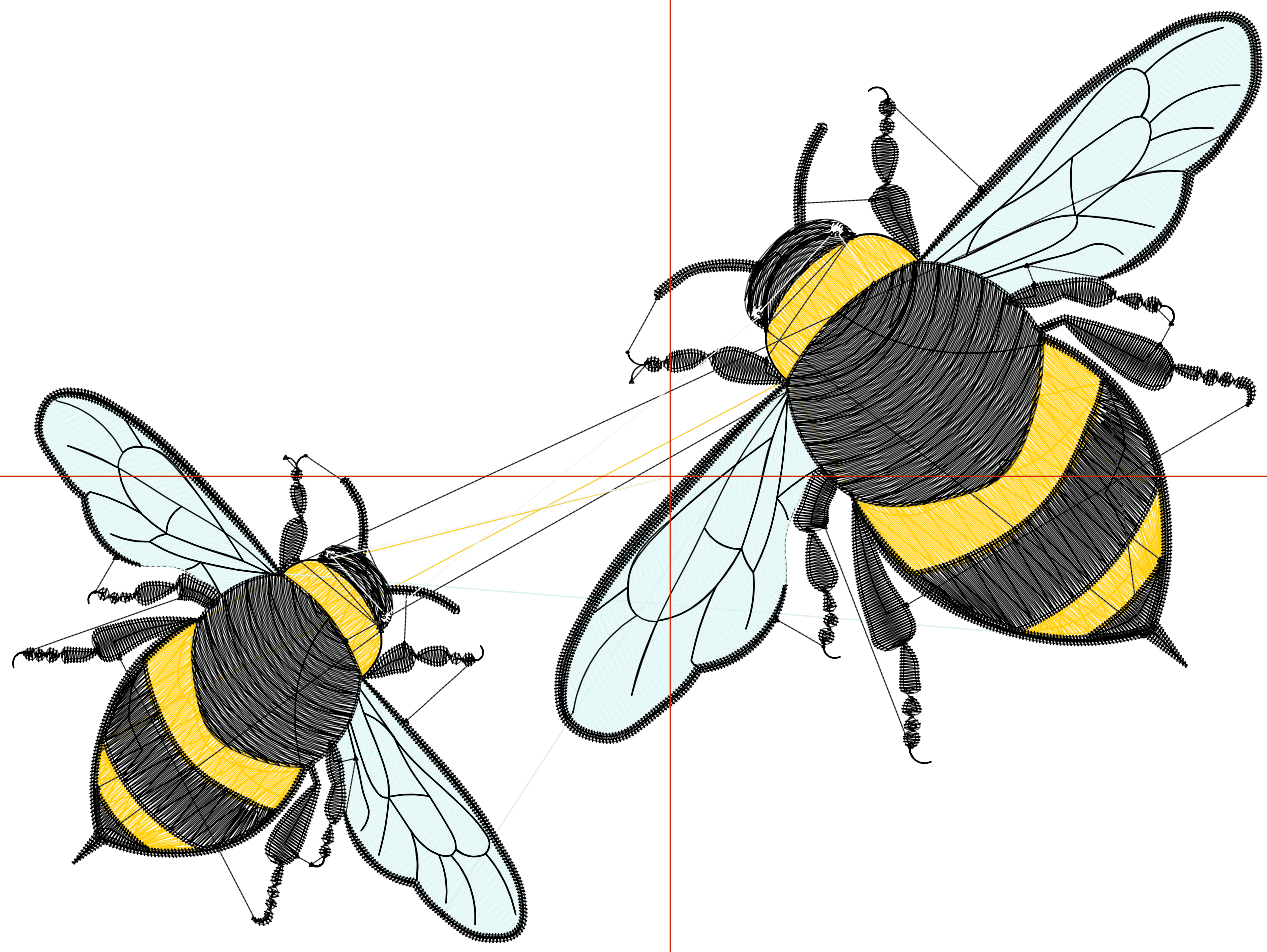
Wilcom EmbroideryStudio - Designing



Design: **6**

Title:

Stitches: 21,194
Height: 4.85 in
Width: 6.51 in
Colors: 4
Colorway: Colorway 1
Zoom: 1:1



Production Worksheet

Wilcom EmbroideryStudio - Designing



Design: **6**

Title:

Stitches: 21,194
 Height: 4.85 in
 Width: 6.51 in
 Colors: 4
 Colorway: Colorway 1
 Zoom: 1:1

Machine format: Tajima
 Color changes: 3
 Stops: 4
 Trims: 49
 Appliqués: 0
 Left: 87.0 mm
 Right: 78.3 mm
 Up: 61.5 mm
 Down: 61.7 mm
 EndX: 0.00 in
 EndY: 0.00 in
 Area 31.56 in²
 Max stitch: 7.0 mm
 Min stitch: 0.0 mm
 Max jump: 7.0 mm
 Total thread: 328.71ft
 Total bobbin: 111.60ft

Stop Sequence:

#	N#	Color	St.	Code	Name	Chart
1.	2		2,510		R255 G206 B12	
2.	1		6,147		R219 G245 B245	
3.	8		12,426	8	Black	Default
4.	9		109	9	White	Default

Production Worksheet

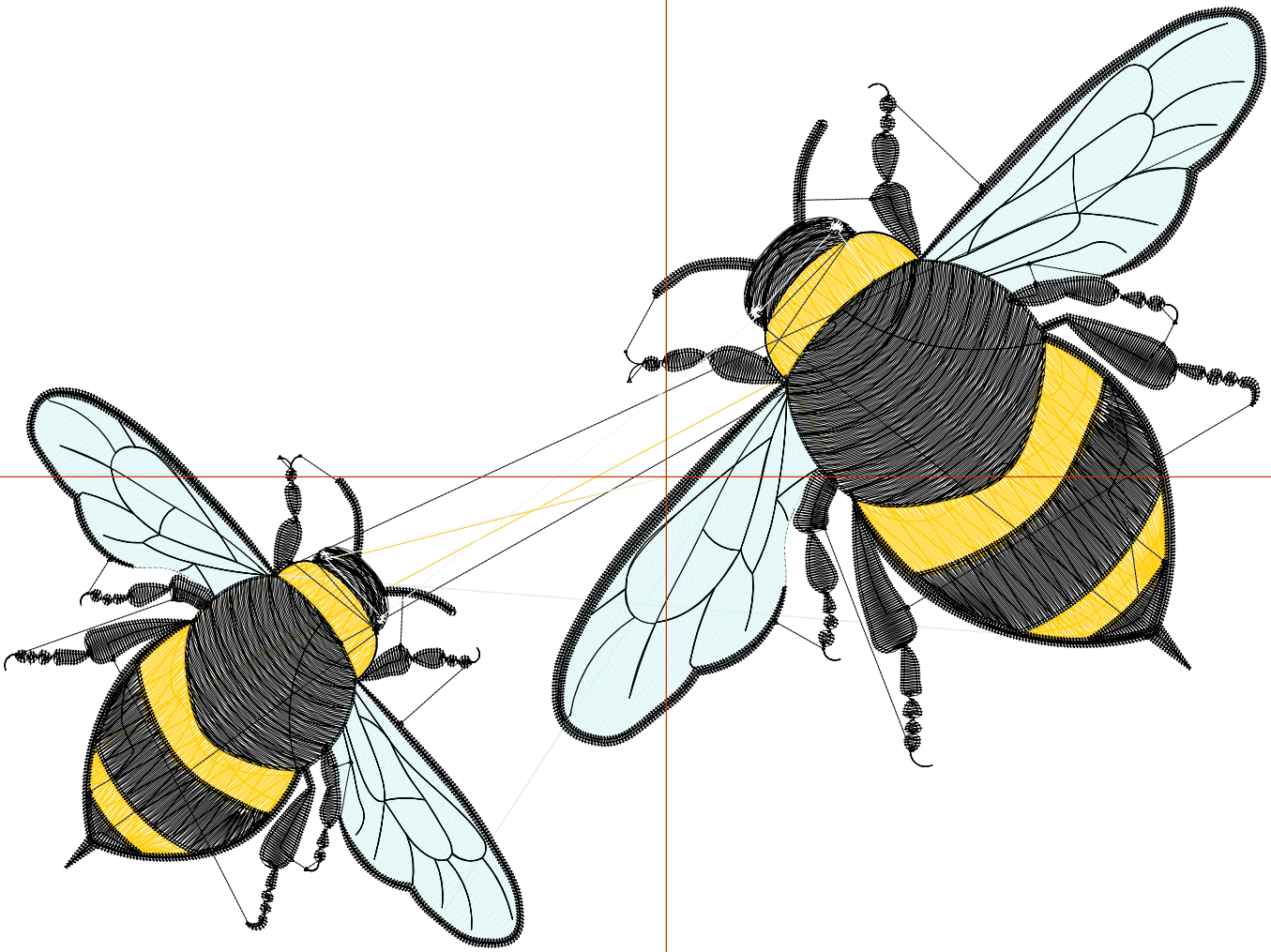
Wilcom EmbroideryStudio - Designing



Design: **7**

Title:

Stitches: 23,603
Height: 5.22 in
Width: 7.01 in
Colors: 4
Colorway: Colorway 1
Zoom: 1:1



Production Worksheet

Wilcom EmbroideryStudio - Designing



Design: **7**

Title:

Stitches: 23,603
 Height: 5.22 in
 Width: 7.01 in
 Colors: 4
 Colorway: Colorway 1
 Zoom: 1:1

Machine format: Tajima
 Color changes: 3
 Stops: 4
 Trims: 49
 Appliqués: 0
 Left: 93.3 mm
 Right: 84.6 mm
 Up: 66.3 mm
 Down: 66.4 mm
 EndX: 0.00 in
 EndY: 0.00 in
 Area 36.59 in²
 Max stitch: 7.2 mm
 Min stitch: 0.0 mm
 Max jump: 7.0 mm
 Total thread: 372.12ft
 Total bobbin: 127.96ft

Stop Sequence:

#	N#	Color	St.	Code	Name	Chart
1.	2		2,779		R255 G206 B12	
2.	1		7,028		R219 G245 B245	
3.	8		13,681	8	Black	Default
4.	9		113	9	White	Default

Production Worksheet

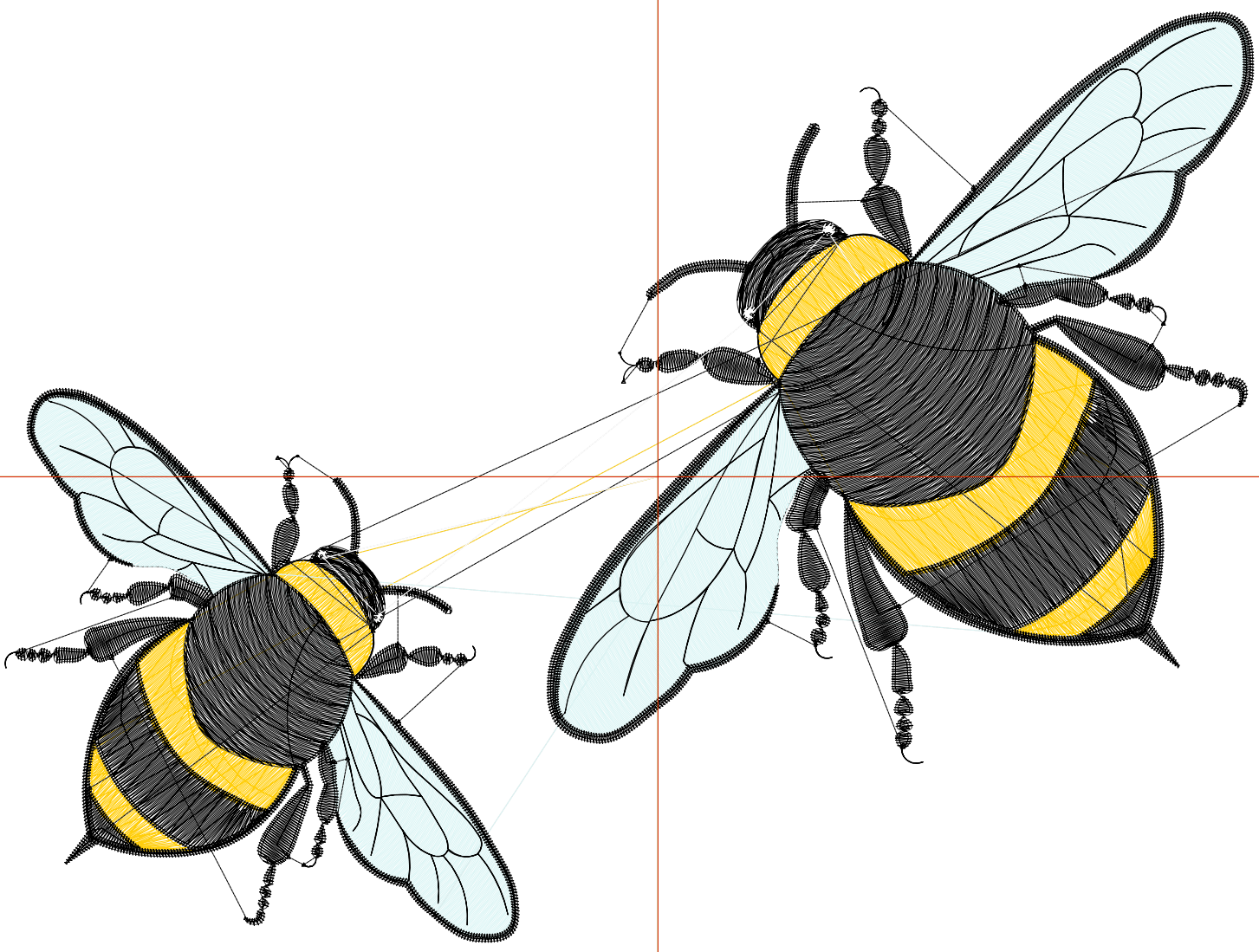
Wilcom EmbroideryStudio - Designing



Design: **7**

Title:

Stitches: 26,062
Height: 5.60 in
Width: 7.51 in
Colors: 4
Colorway: Colorway 1
Zoom: 1:1



Production Worksheet

Wilcom EmbroideryStudio - Designing



Design: **7**

Title:

Stitches: 26,062
 Height: 5.60 in
 Width: 7.51 in
 Colors: 4
 Colorway: Colorway 1
 Zoom: 1:1

Machine format: Tajima
 Color changes: 3
 Stops: 4
 Trims: 50
 Appliqués: 0
 Left: 99.7 mm
 Right: 91.0 mm
 Up: 71.0 mm
 Down: 71.1 mm
 EndX: 0.00 in
 EndY: 0.00 in
 Area 42.00 in²
 Max stitch: 7.9 mm
 Min stitch: 0.0 mm
 Max jump: 7.0 mm
 Total thread: 417.70ft
 Total bobbin: 145.41ft

Stop Sequence:

#	N#	Color	St.	Code	Name	Chart
1.	2		3,050		R255 G206 B12	
2.	1		7,943		R219 G245 B245	
3.	8		14,948	8	Black	Default
4.	9		119	9	White	Default