

Production Worksheet

Wilcom EmbroideryStudio - Designing



Design: **3**

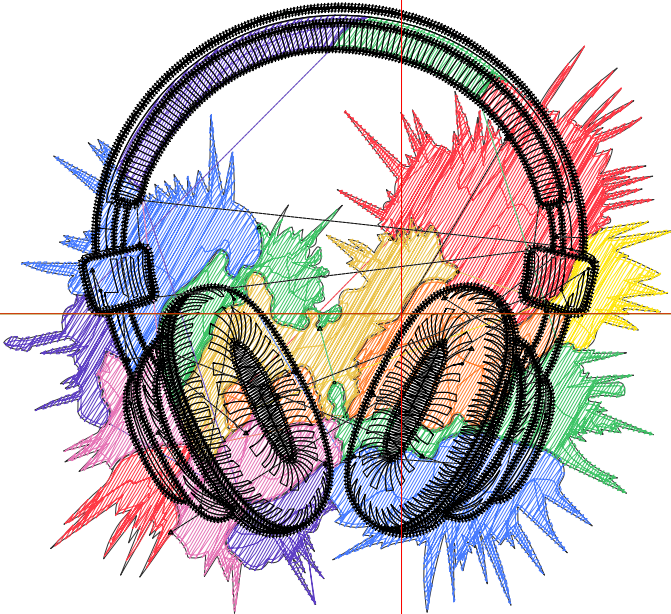
Title:

Stitches: 17,013
 Height: 3.17 in
 Width: 3.49 in
 Colors: 9
 Colorway: Colorway 1
 Zoom: 1:1

Machine format: Tajima
 Color changes: 8
 Stops: 9
 Trims: 55
 Appliqués: 0
 Left: 52.5 mm
 Right: 36.0 mm
 Up: 41.1 mm
 Down: 39.4 mm
 EndX: 0.00 in
 EndY: 0.00 in
 Area: 11.04 in²
 Max stitch: 11.7 mm
 Min stitch: 0.0 mm
 Max jump: 6.9 mm
 Total thread: 239.14ft
 Total bobbin: 73.81ft

Stop Sequence:

| # | N# | Color | St. | Code | Name | Chart |
|----|----|-------|-------|------|----------------|-------|
| 1. | 2 | | 1,918 | | R255 G57 B70 | |
| 2. | 3 | | 735 | | R255 G130 B52 | |
| 3. | 4 | | 429 | | R255 G231 B20 | |
| 4. | 6 | | 918 | | R235 G195 B76 | |
| 5. | 5 | | 1,810 | | R72 G124 B255 | |
| 6. | 7 | | 1,460 | | R63 G196 B103 | |
| 7. | 8 | | 926 | | R94 G63 B196 | |
| 8. | 9 | | 744 | | R230 G117 B182 | |
| 9. | 10 | | 8,071 | | R0 G0 B0 | |



Production Worksheet

Wilcom EmbroideryStudio - Designing



Design: **4**

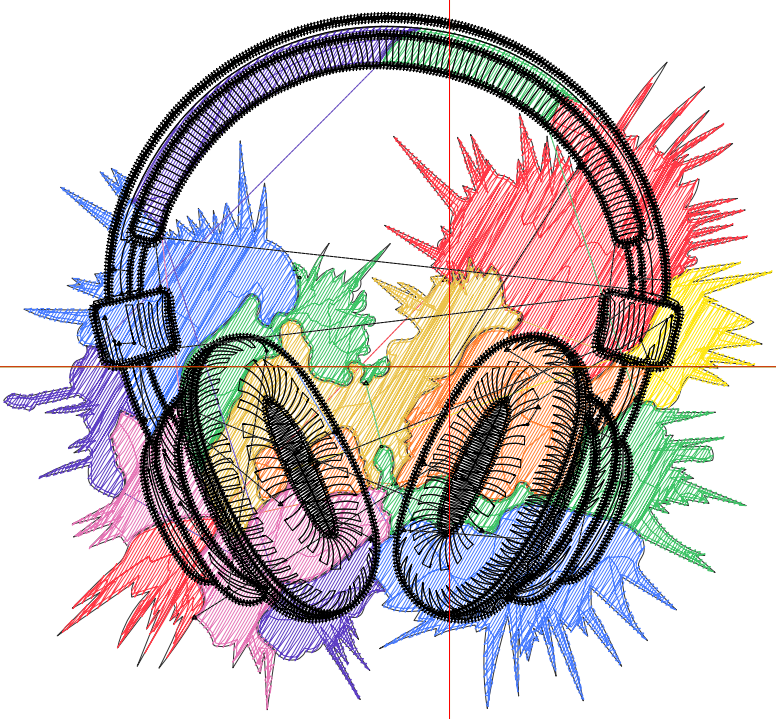
Title:

Stitches: 19,612
Height: 3.63 in
Width: 4.00 in
Colors: 9
Colorway: Colorway 1
Zoom: 1:1

Machine format: Tajima
Color changes: 8
Stops: 9
Trims: 57
Appliqués: 0
Left: 59.0 mm
Right: 42.7 mm
Up: 46.9 mm
Down: 45.3 mm
EndX: 0.00 in
EndY: 0.00 in
Area 14.53 in²
Max stitch: 9.6 mm
Min stitch: 0.0 mm
Max jump: 6.9 mm
Total thread: 285.03ft
Total bobbin: 90.90ft

Stop Sequence:

| # | N# | Color | St. | Code | Name | Chart |
|----|----|-------|-------|------|----------------|-------|
| 1. | 2 | | 2,254 | | R255 G57 B70 | |
| 2. | 3 | | 865 | | R255 G130 B52 | |
| 3. | 4 | | 517 | | R255 G231 B20 | |
| 4. | 6 | | 1,085 | | R235 G195 B76 | |
| 5. | 5 | | 2,133 | | R72 G124 B255 | |
| 6. | 7 | | 1,734 | | R63 G196 B103 | |
| 7. | 8 | | 1,090 | | R94 G63 B196 | |
| 8. | 9 | | 863 | | R230 G117 B182 | |
| 9. | 10 | | 9,069 | | R0 G0 B0 | |



Production Worksheet

Wilcom EmbroideryStudio - Designing



Design: **4**

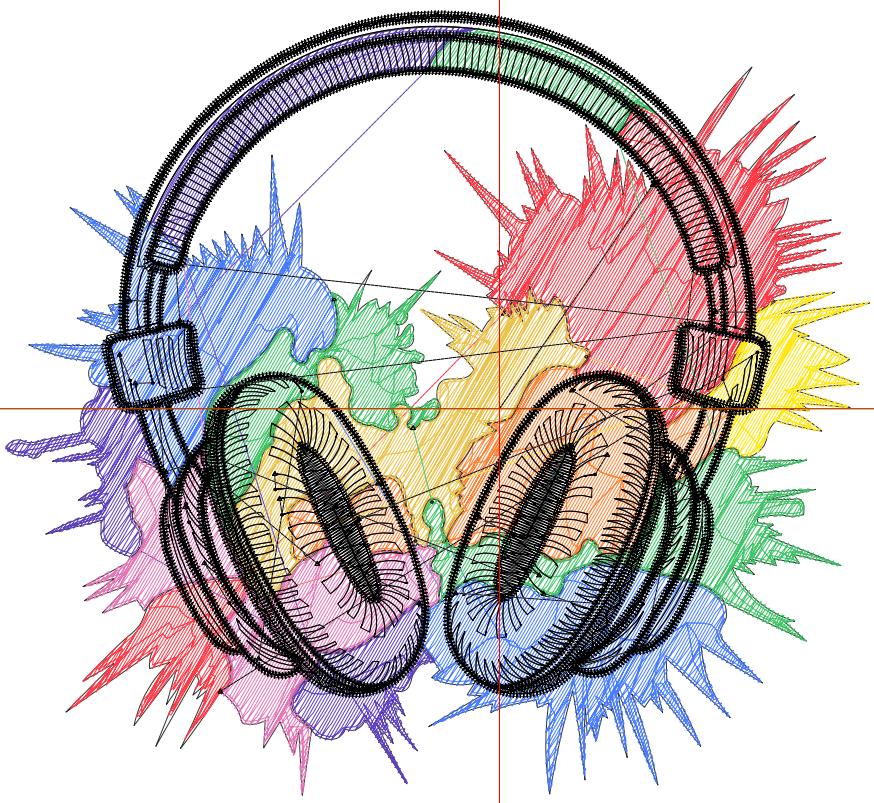
Title:

Stitches: 22,353
 Height: 4.08 in
 Width: 4.50 in
 Colors: 9
 Colorway: Colorway 1
 Zoom: 1:1

Machine format: Tajima
 Color changes: 8
 Stops: 9
 Trims: 62
 Appliqués: 0
 Left: 65.3 mm
 Right: 48.9 mm
 Up: 52.7 mm
 Down: 51.0 mm
 EndX: 0.00 in
 EndY: 0.00 in
 Area 18.35 in²
 Max stitch: 7.0 mm
 Min stitch: 0.0 mm
 Max jump: 7.0 mm
 Total thread: 334.52ft
 Total bobbin: 109.57ft

Stop Sequence:

| # | N# | Color | St. | Code | Name | Chart |
|----|----|-------|--------|------|----------------|-------|
| 1. | 2 | | 2,660 | | R255 G57 B70 | |
| 2. | 3 | | 1,017 | | R255 G130 B52 | |
| 3. | 4 | | 580 | | R255 G231 B20 | |
| 4. | 6 | | 1,273 | | R235 G195 B76 | |
| 5. | 5 | | 2,487 | | R72 G124 B255 | |
| 6. | 7 | | 1,960 | | R63 G196 B103 | |
| 7. | 8 | | 1,243 | | R94 G63 B196 | |
| 8. | 9 | | 1,018 | | R230 G117 B182 | |
| 9. | 10 | | 10,113 | | R0 G0 B0 | |



Production Worksheet

Wilcom EmbroideryStudio - Designing



Design: **5**

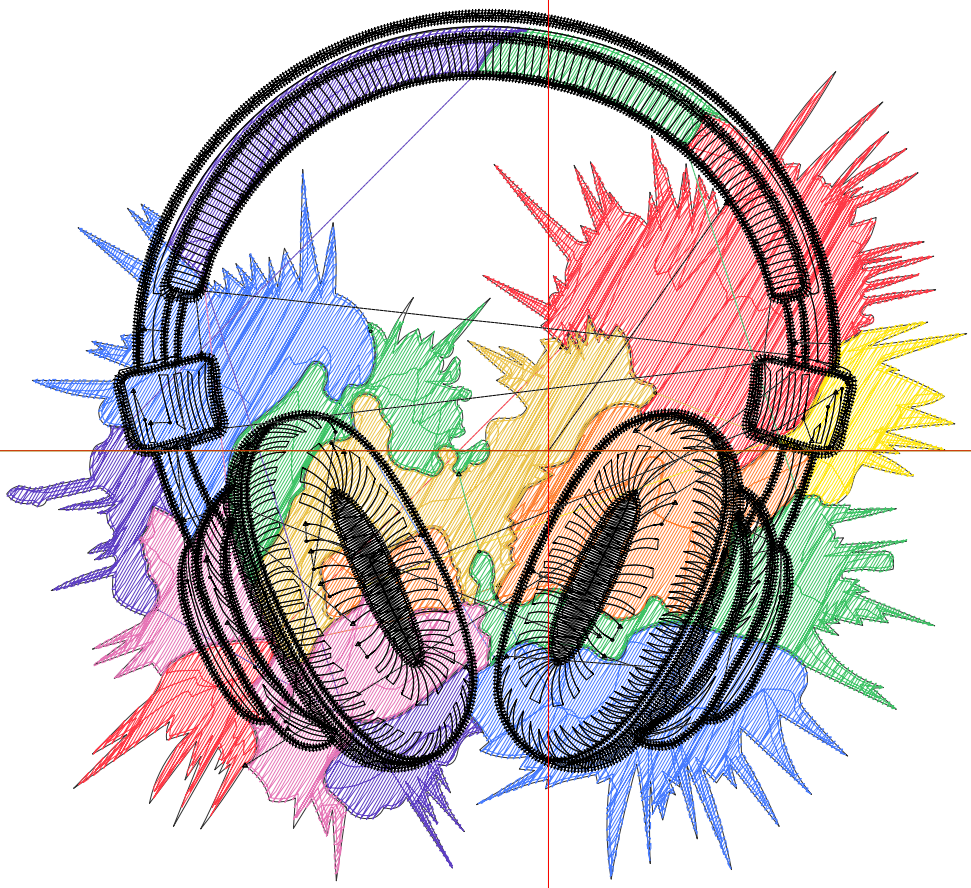
Title:

Stitches: 25,290
 Height: 4.52 in
 Width: 4.99 in
 Colors: 9
 Colorway: Colorway 1
 Zoom: 1:1

Machine format: Tajima
 Color changes: 8
 Stops: 9
 Trims: 69
 Appliqués: 0
 Left: 71.7 mm
 Right: 55.1 mm
 Up: 58.4 mm
 Down: 56.3 mm
 EndX: 0.00 in
 EndY: 0.00 in
 Area: 22.55 in²
 Max stitch: 6.8 mm
 Min stitch: 0.0 mm
 Max jump: 6.8 mm
 Total thread: 387.87ft
 Total bobbin: 129.76ft

Stop Sequence:

| # | N# | Color | St. | Code | Name | Chart |
|----|----|---|--------|------|----------------|-------|
| 1. | 2 | | 3,068 | | R255 G57 B70 | |
| 2. | 3 | | 1,161 | | R255 G130 B52 | |
| 3. | 4 | | 631 | | R255 G231 B20 | |
| 4. | 6 | | 1,417 | | R235 G195 B76 | |
| 5. | 5 | | 2,895 | | R72 G124 B255 | |
| 6. | 7 | | 2,265 | | R63 G196 B103 | |
| 7. | 8 | | 1,453 | | R94 G63 B196 | |
| 8. | 9 | | 1,168 | | R230 G117 B182 | |
| 9. | 10 | | 11,230 | | R0 G0 B0 | |



Production Worksheet

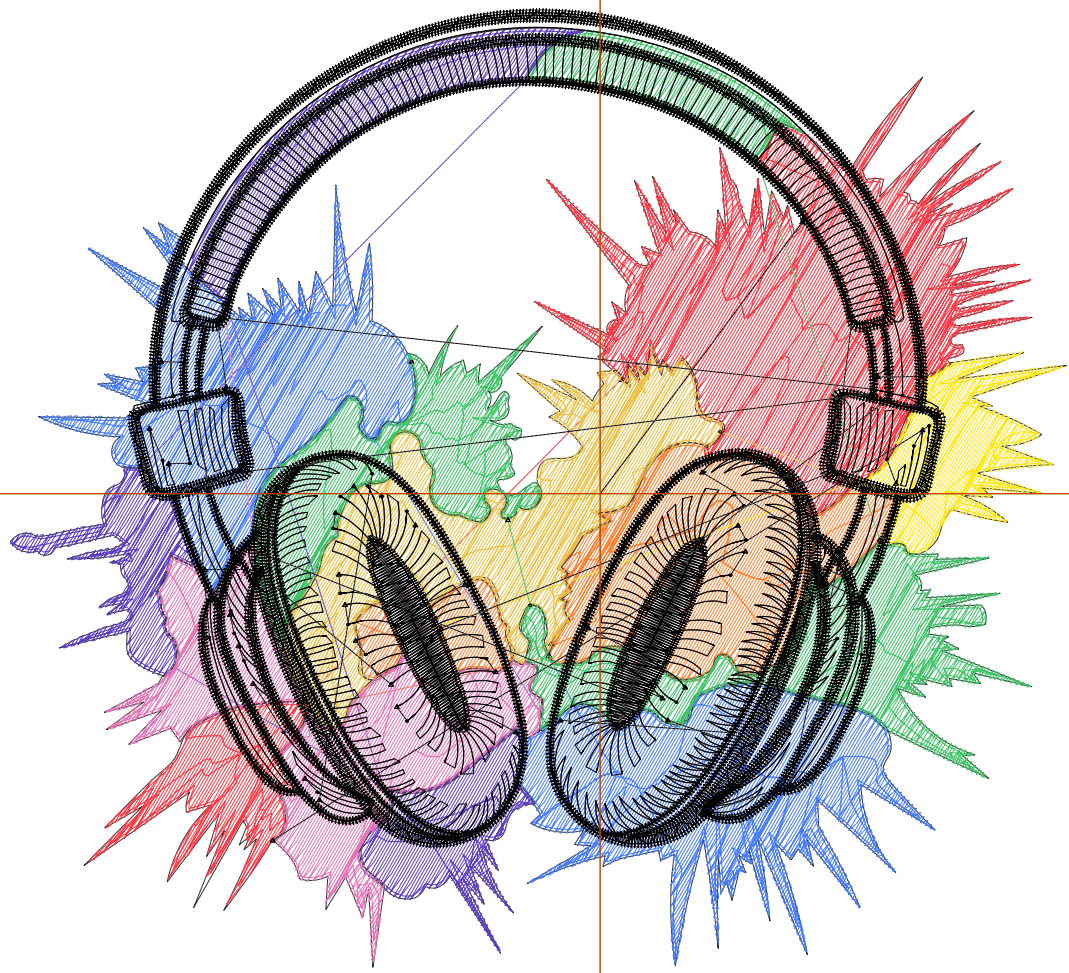
Wilcom EmbroideryStudio - Designing



Design: **5**

Title:

Stitches: 28,279
Height: 4.97 in
Width: 5.49 in
Colors: 9
Colorway: Colorway 1
Zoom: 1:1



Production Worksheet

Wilcom EmbroideryStudio - Designing



Design: **5**

Title:

Stitches: 28,279
 Height: 4.97 in
 Width: 5.49 in
 Colors: 9
 Colorway: Colorway 1
 Zoom: 1:1

Machine format: Tajima
 Color changes: 8
 Stops: 9
 Trims: 81
 Appliqués: 0
 Left: 78.0 mm
 Right: 61.4 mm
 Up: 64.2 mm
 Down: 62.1 mm
 EndX: 0.00 in
 EndY: 0.00 in
 Area 27.28 in²
 Max stitch: 6.9 mm
 Min stitch: 0.0 mm
 Max jump: 6.9 mm
 Total thread: 443.19ft
 Total bobbin: 150.92ft

Stop Sequence:

| # | N# | Color | St. | Code | Name | Chart |
|----|----|-------|--------|------|----------------|-------|
| 1. | 2 | | 3,409 | | R255 G57 B70 | |
| 2. | 3 | | 1,330 | | R255 G130 B52 | |
| 3. | 4 | | 723 | | R255 G231 B20 | |
| 4. | 6 | | 1,641 | | R235 G195 B76 | |
| 5. | 5 | | 3,318 | | R72 G124 B255 | |
| 6. | 7 | | 2,543 | | R63 G196 B103 | |
| 7. | 8 | | 1,652 | | R94 G63 B196 | |
| 8. | 9 | | 1,320 | | R230 G117 B182 | |
| 9. | 10 | | 12,341 | | R0 G0 B0 | |

Production Worksheet

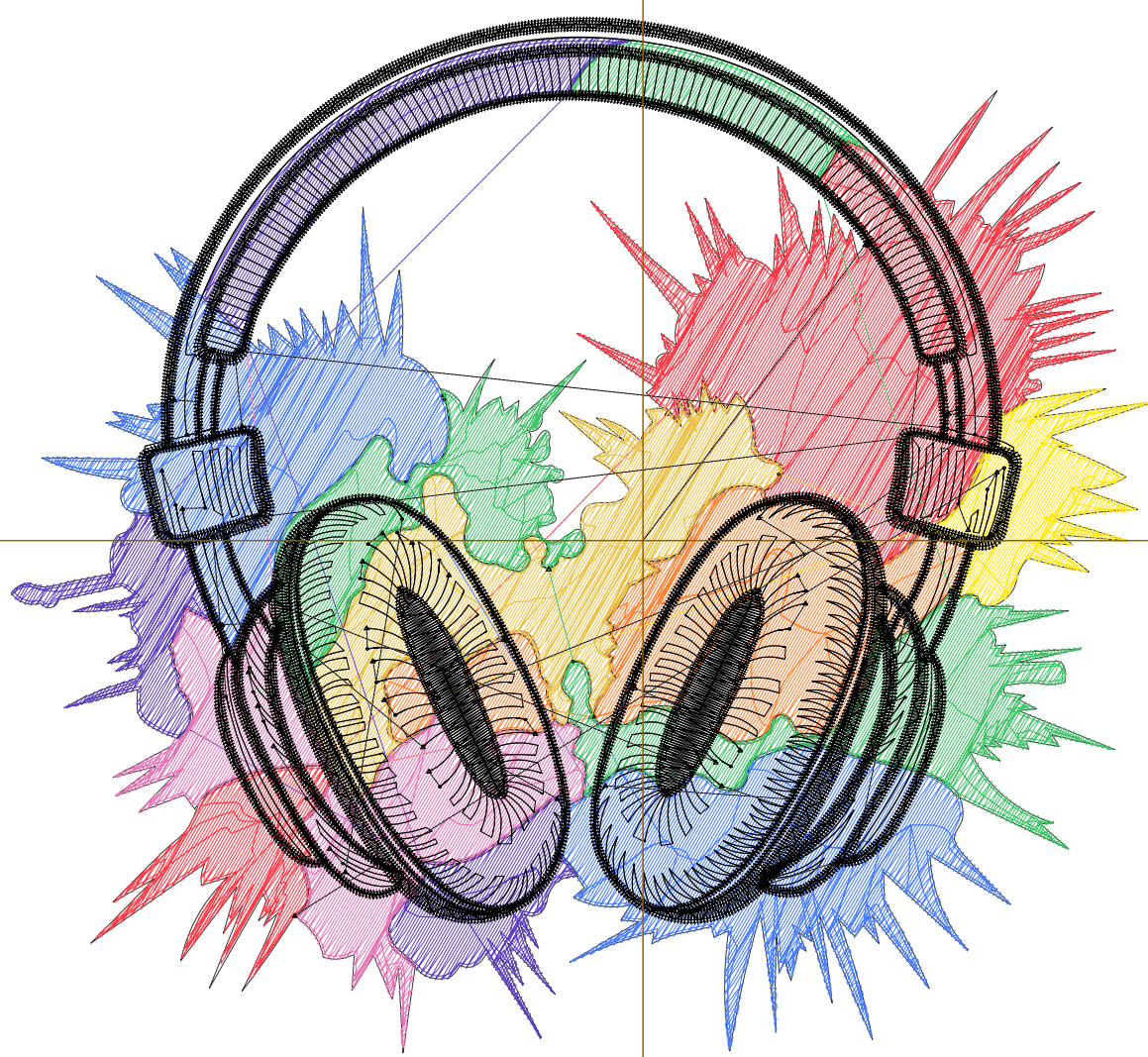
Wilcom EmbroideryStudio - Designing



Design: **6**

Title:

Stitches: 31,323
Height: 5.43 in
Width: 5.99 in
Colors: 9
Colorway: Colorway 1
Zoom: 1:1



Production Worksheet

Wilcom EmbroideryStudio - Designing



Design: **6**

Title:

Stitches: 31,323
 Height: 5.43 in
 Width: 5.99 in
 Colors: 9
 Colorway: Colorway 1
 Zoom: 1:1

Machine format: Tajima
 Color changes: 8
 Stops: 9
 Trims: 84
 Appliqués: 0
 Left: 84.3 mm
 Right: 67.9 mm
 Up: 69.9 mm
 Down: 67.9 mm
 EndX: 0.00 in
 EndY: 0.00 in
 Area 32.54 in²
 Max stitch: 7.2 mm
 Min stitch: 0.0 mm
 Max jump: 7.0 mm
 Total thread: 502.27ft
 Total bobbin: 174.10ft

Stop Sequence:

| # | N# | Color | St. | Code | Name | Chart |
|----|----|-------|--------|------|----------------|-------|
| 1. | 2 | | 3,861 | | R255 G57 B70 | |
| 2. | 3 | | 1,515 | | R255 G130 B52 | |
| 3. | 4 | | 802 | | R255 G231 B20 | |
| 4. | 6 | | 1,915 | | R235 G195 B76 | |
| 5. | 5 | | 3,674 | | R72 G124 B255 | |
| 6. | 7 | | 2,836 | | R63 G196 B103 | |
| 7. | 8 | | 1,850 | | R94 G63 B196 | |
| 8. | 9 | | 1,482 | | R230 G117 B182 | |
| 9. | 10 | | 13,386 | | R0 G0 B0 | |

Production Worksheet

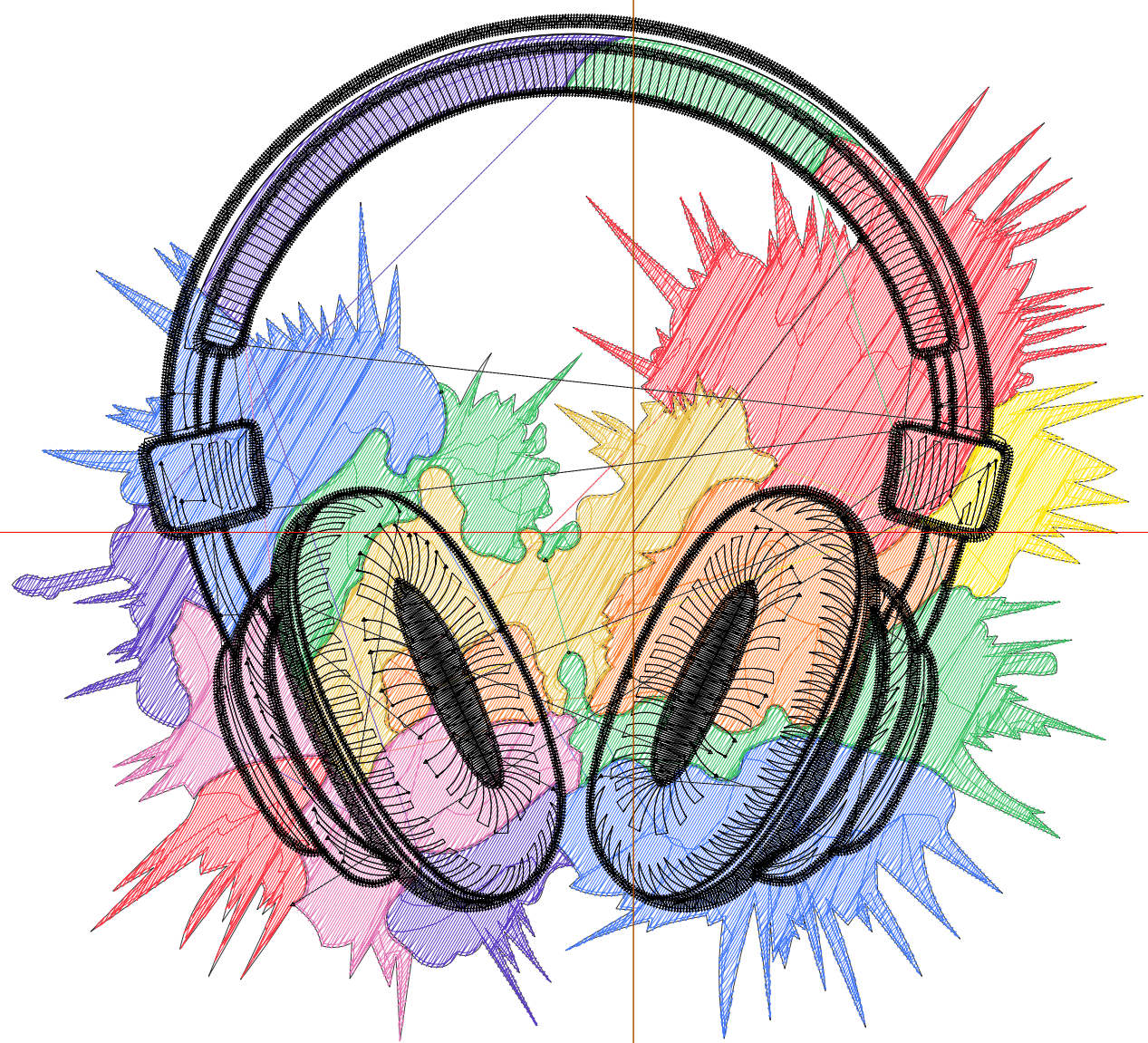
Wilcom EmbroideryStudio - Designing



Design: **6**

Title:

Stitches: 34,474
Height: 5.90 in
Width: 6.48 in
Colors: 9
Colorway: Colorway 1
Zoom: 1:1



Production Worksheet

Wilcom EmbroideryStudio - Designing



Design: **6**

Title:

Stitches: 34,474
 Height: 5.90 in
 Width: 6.48 in
 Colors: 9
 Colorway: Colorway 1
 Zoom: 1:1

Machine format: Tajima
 Color changes: 8
 Stops: 9
 Trims: 92
 Appliqués: 0
 Left: 90.5 mm
 Right: 74.2 mm
 Up: 75.7 mm
 Down: 74.2 mm
 EndX: 0.00 in
 EndY: 0.00 in
 Area 38.27 in²
 Max stitch: 7.7 mm
 Min stitch: 0.0 mm
 Max jump: 7.0 mm
 Total thread: 565.71ft
 Total bobbin: 199.44ft

Stop Sequence:

| # | N# | Color | St. | Code | Name | Chart |
|----|----|-------|--------|------|----------------|-------|
| 1. | 2 | | 4,302 | | R255 G57 B70 | |
| 2. | 3 | | 1,703 | | R255 G130 B52 | |
| 3. | 4 | | 898 | | R255 G231 B20 | |
| 4. | 6 | | 2,129 | | R235 G195 B76 | |
| 5. | 5 | | 4,122 | | R72 G124 B255 | |
| 6. | 7 | | 3,158 | | R63 G196 B103 | |
| 7. | 8 | | 2,059 | | R94 G63 B196 | |
| 8. | 9 | | 1,677 | | R230 G117 B182 | |
| 9. | 10 | | 14,424 | | R0 G0 B0 | |

Production Worksheet

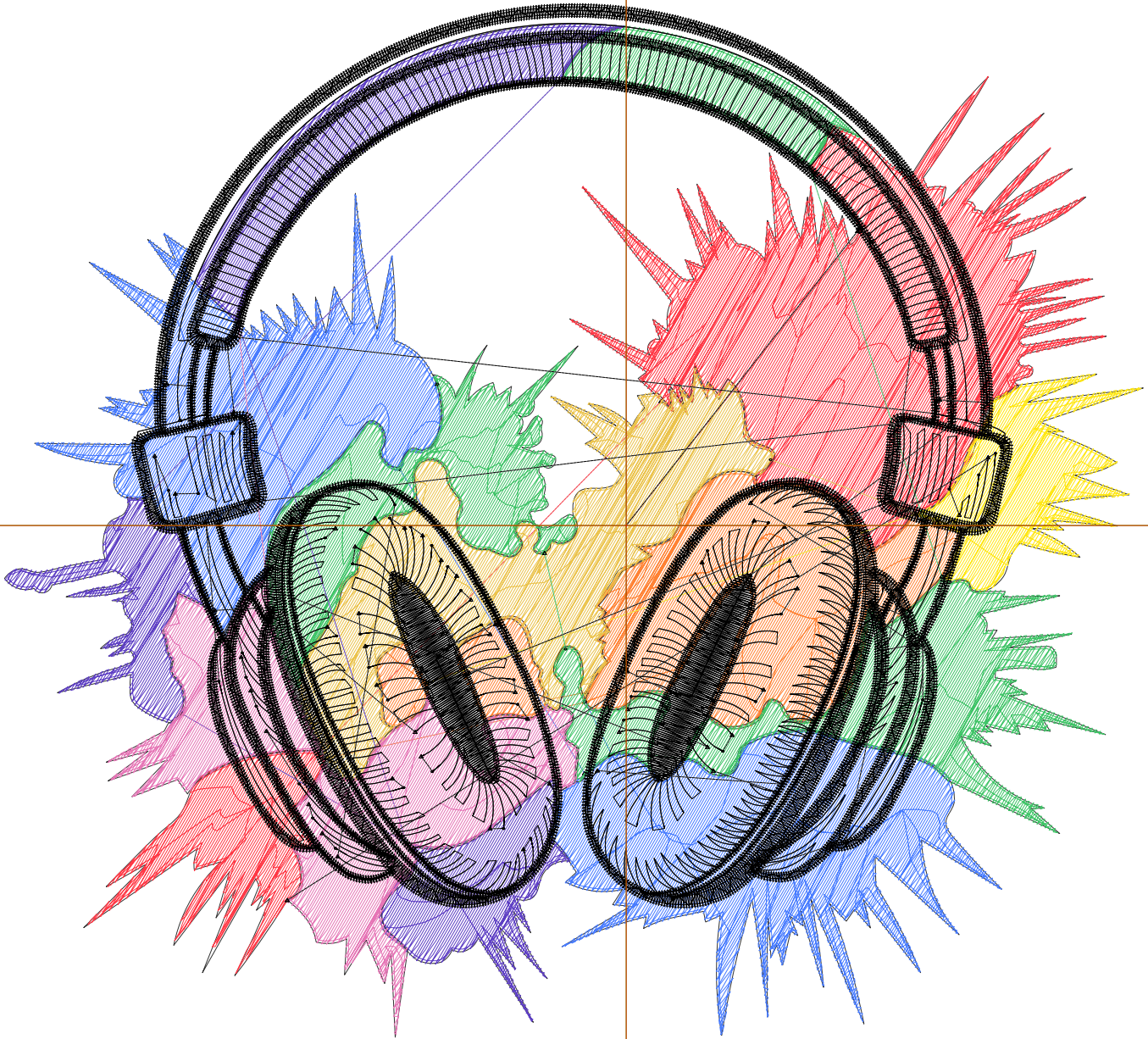
Wilcom EmbroideryStudio - Designing



Design: **7**

Title:

Stitches: 37,559
Height: 6.34 in
Width: 6.98 in
Colors: 9
Colorway: Colorway 1
Zoom: 1:1



Production Worksheet

Wilcom EmbroideryStudio - Designing



Design: **7**

Title:

Stitches: 37,559
 Height: 6.34 in
 Width: 6.98 in
 Colors: 9
 Colorway: Colorway 1
 Zoom: 1:1

Machine format: Tajima
 Color changes: 8
 Stops: 9
 Trims: 109
 Appliqués: 0
 Left: 97.0 mm
 Right: 80.4 mm
 Up: 81.5 mm
 Down: 79.5 mm
 EndX: 0.00 in
 EndY: 0.00 in
 Area 44.27 in²
 Max stitch: 10.2 mm
 Min stitch: 0.0 mm
 Max jump: 6.9 mm
 Total thread: 628.02ft
 Total bobbin: 224.37ft

Stop Sequence:

| # | N# | Color | St. | Code | Name | Chart |
|----|----|-------|--------|------|----------------|-------|
| 1. | 2 | | 4,718 | | R255 G57 B70 | |
| 2. | 3 | | 1,907 | | R255 G130 B52 | |
| 3. | 4 | | 982 | | R255 G231 B20 | |
| 4. | 6 | | 2,287 | | R235 G195 B76 | |
| 5. | 5 | | 4,542 | | R72 G124 B255 | |
| 6. | 7 | | 3,442 | | R63 G196 B103 | |
| 7. | 8 | | 2,257 | | R94 G63 B196 | |
| 8. | 9 | | 1,877 | | R230 G117 B182 | |
| 9. | 10 | | 15,545 | | R0 G0 B0 | |

Production Worksheet

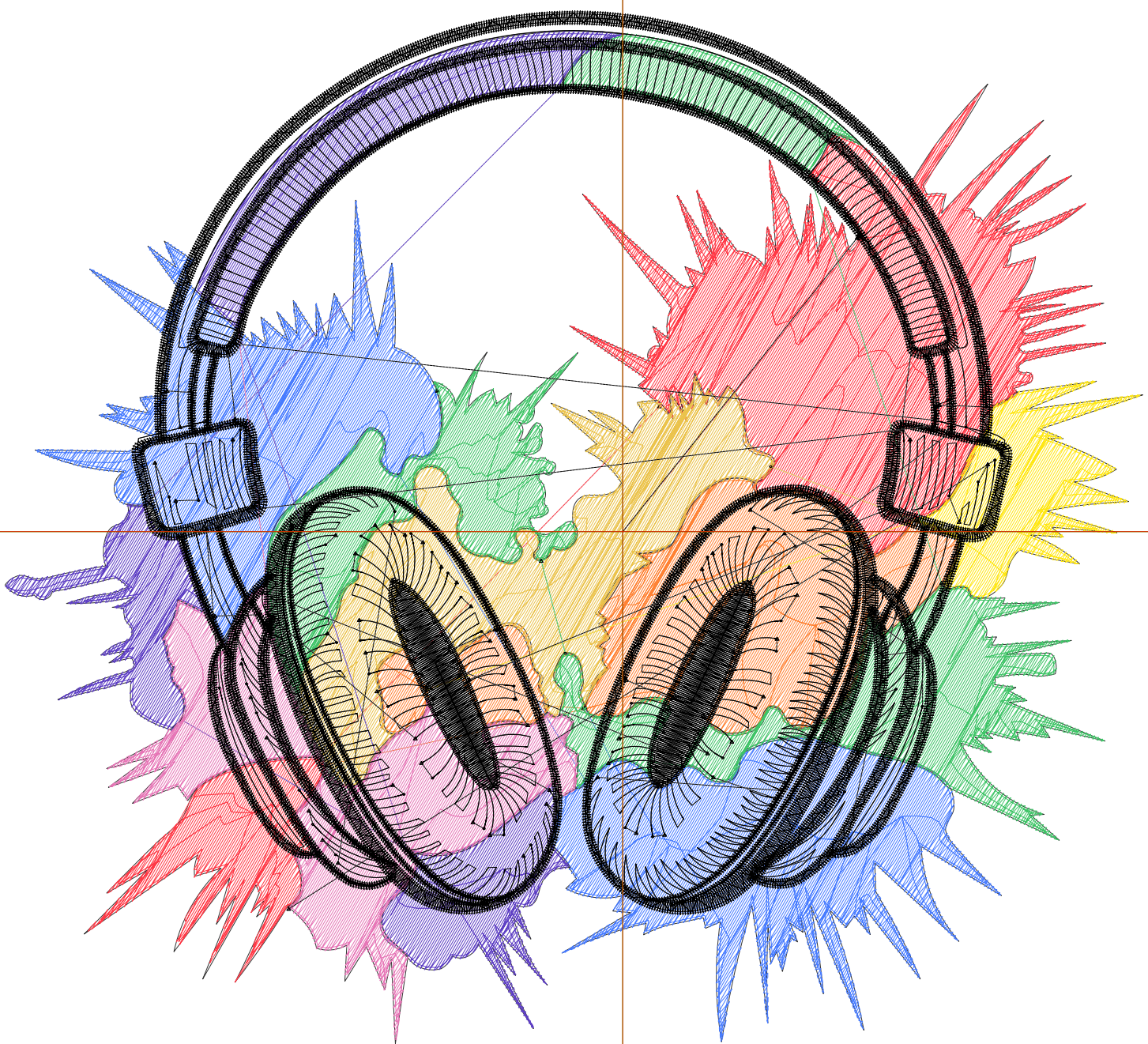
Wilcom EmbroideryStudio - Designing



Design: **7**

Title:

Stitches: 41,060
Height: 6.79 in
Width: 7.48 in
Colors: 9
Colorway: Colorway 1
Zoom: 1:1



Production Worksheet

Wilcom EmbroideryStudio - Designing



Design: **7**

Title:

Stitches: 41,060
 Height: 6.79 in
 Width: 7.48 in
 Colors: 9
 Colorway: Colorway 1
 Zoom: 1:1

Machine format: Tajima
 Color changes: 8
 Stops: 9
 Trims: 122
 Appliqués: 0
 Left: 103.3 mm
 Right: 86.6 mm
 Up: 87.2 mm
 Down: 85.3 mm
 EndX: 0.00 in
 EndY: 0.00 in
 Area 50.82 in²
 Max stitch: 9.8 mm
 Min stitch: 0.0 mm
 Max jump: 7.0 mm
 Total thread: 699.07ft
 Total bobbin: 252.86ft

Stop Sequence:

| # | N# | Color | St. | Code | Name | Chart |
|----|----|-------|--------|------|----------------|-------|
| 1. | 2 | | 5,161 | | R255 G57 B70 | |
| 2. | 3 | | 2,132 | | R255 G130 B52 | |
| 3. | 4 | | 1,084 | | R255 G231 B20 | |
| 4. | 6 | | 2,578 | | R235 G195 B76 | |
| 5. | 5 | | 5,035 | | R72 G124 B255 | |
| 6. | 7 | | 3,852 | | R63 G196 B103 | |
| 7. | 8 | | 2,501 | | R94 G63 B196 | |
| 8. | 9 | | 2,099 | | R230 G117 B182 | |
| 9. | 10 | | 16,616 | | R0 G0 B0 | |