

# Production Worksheet

Wilcom EmbroideryStudio - Designing



Design: **3**

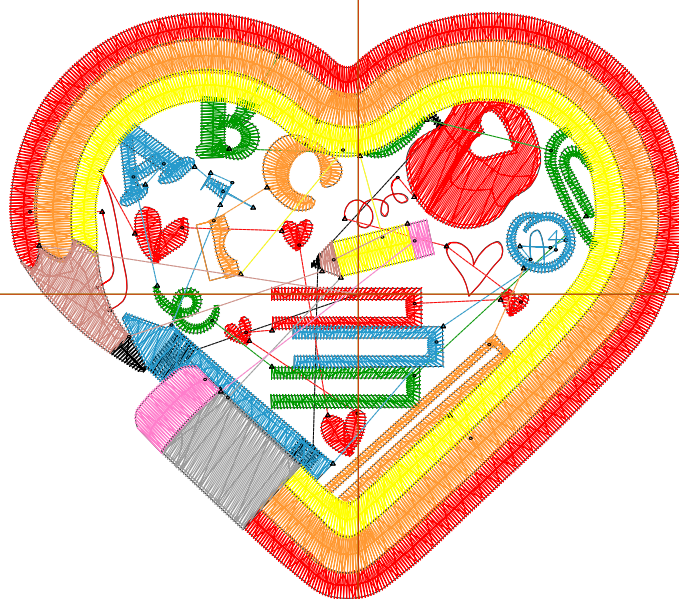
Title:

Stitches: 9,294  
 Height: 3.06 in  
 Width: 3.51 in  
 Colors: 9  
 Colorway: Colorway 1  
 Zoom: 1:1

Machine format: Tajima  
 Color changes: 8  
 Stops: 9  
 Trims: 42  
 Appliqués: 0  
 Left: 46.1 mm  
 Right: 43.1 mm  
 Up: 37.3 mm  
 Down: 40.4 mm  
 EndX: 0.00 in  
 EndY: 0.00 in  
 Area: 10.74 in<sup>2</sup>  
 Max stitch: 10.1 mm  
 Min stitch: 0.0 mm  
 Max jump: 6.4 mm  
 Total thread: 180.13ft  
 Total bobbin: 68.86ft

Stop Sequence:

#	N#	Color	St.	Code	Name	Chart
1.	8		241	R0	G0 B0	
2.	3		2,765	R255	G0 B0	
3.	1		885	R0	G153 B0	
4.	5		1,223	R38	G154 B204	
5.	12		2,016	R255	G153 B51	
6.	4		1,267	R255	G255 B0	
7.	9		387	R156	G156 B156	
8.	15		143	15	Pink	Default
9.	2		365	R207	G138 B128	



# Production Worksheet

Wilcom EmbroideryStudio - Designing



Design: **4**

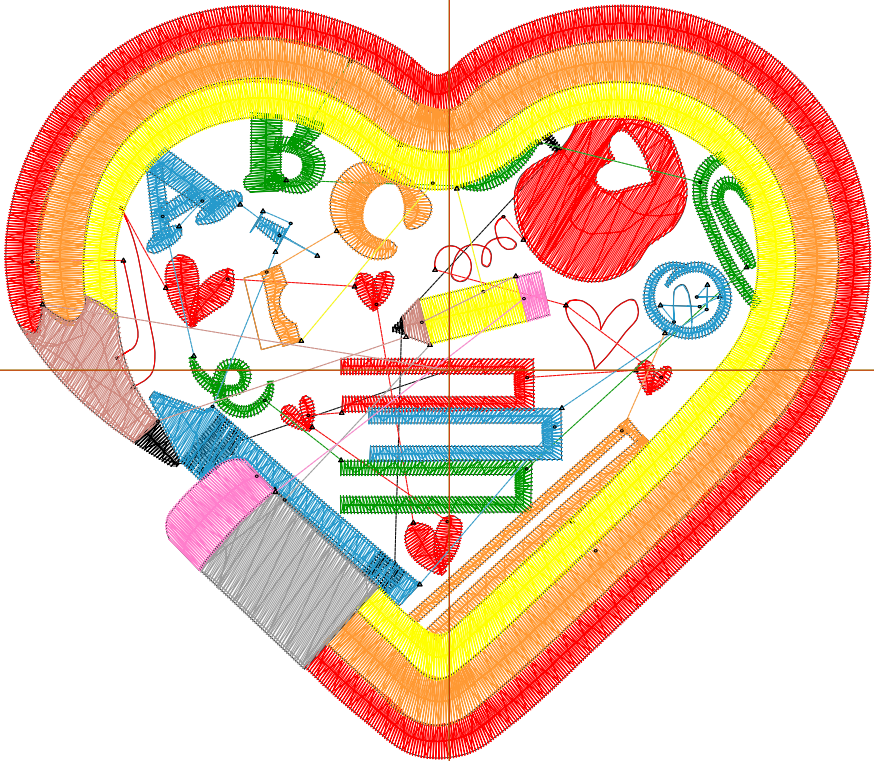
Title:

Stitches: 12,584  
 Height: 3.93 in  
 Width: 4.51 in  
 Colors: 9  
 Colorway: Colorway 1  
 Zoom: 1:1

Machine format: Tajima  
 Color changes: 8  
 Stops: 9  
 Trims: 43  
 Appliqués: 0  
 Left: 58.8 mm  
 Right: 55.8 mm  
 Up: 48.3 mm  
 Down: 51.5 mm  
 EndX: 0.00 in  
 EndY: 0.00 in  
 Area: 17.73 in<sup>2</sup>  
 Max stitch: 8.1 mm  
 Min stitch: 0.0 mm  
 Max jump: 7.0 mm  
 Total thread: 277.18ft  
 Total bobbin: 113.57ft

Stop Sequence:

#	N#	Color	St.	Code	Name	Chart
1.	8	Black	296	R0	G0 B0	
2.	3	Red	3,702	R255	G0 B0	
3.	1	Green	1,126	R0	G153 B0	
4.	5	Blue	1,589	R38	G154 B204	
5.	12	Orange	2,866	R255	G153 B51	
6.	4	Yellow	1,731	R255	G255 B0	
7.	9	Grey	581	R156	G156 B156	
8.	15	Pink	194	15	Pink	Default
9.	2	Brown	497	R207	G138 B128	



# Production Worksheet

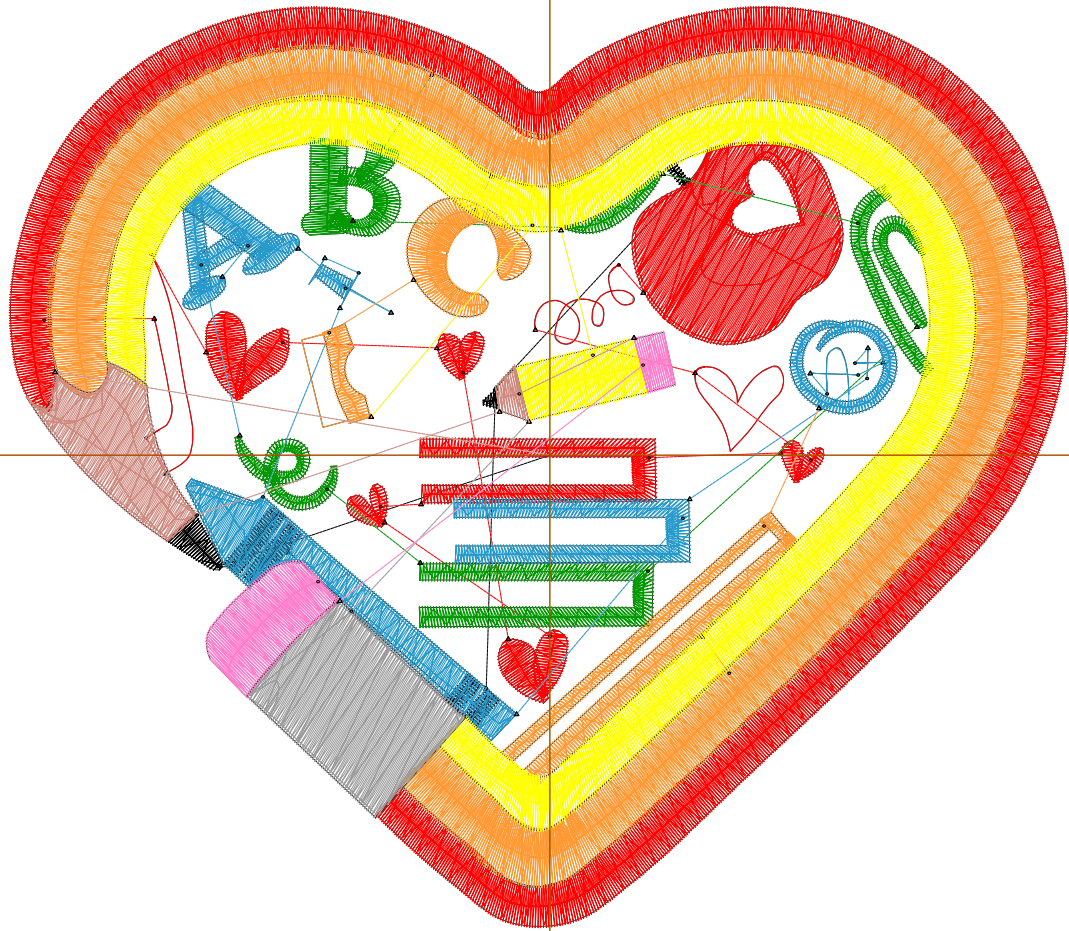
Wilcom EmbroideryStudio - Designing



Design: **5**

Title:

Stitches: 16,362  
Height: 4.80 in  
Width: 5.51 in  
Colors: 9  
Colorway: Colorway 1  
Zoom: 1:1



# Production Worksheet

Wilcom EmbroideryStudio - Designing



Design: **5**

Title:

Stitches: 16,362  
 Height: 4.80 in  
 Width: 5.51 in  
 Colors: 9  
 Colorway: Colorway 1  
 Zoom: 1:1

Machine format: Tajima  
 Color changes: 8  
 Stops: 9  
 Trims: 43  
 Appliqués: 0  
 Left: 71.5 mm  
 Right: 68.5 mm  
 Up: 59.4 mm  
 Down: 62.5 mm  
 EndX: 0.00 in  
 EndY: 0.00 in  
 Area 26.45 in<sup>2</sup>  
 Max stitch: 9.8 mm  
 Min stitch: 0.1 mm  
 Max jump: 6.8 mm  
 Total thread: 398.12ft  
 Total bobbin: 170.55ft

Stop Sequence:

#	N#	Color	St.	Code	Name	Chart
1.	8		354		R0 G0 B0	
2.	3		4,938		R255 G0 B0	
3.	1		1,392		R0 G153 B0	
4.	5		1,969		R38 G154 B204	
5.	12		3,644		R255 G153 B51	
6.	4		2,358		R255 G255 B0	
7.	9		806		R156 G156 B156	
8.	15		229	15	Pink	Default
9.	2		670		R207 G138 B128	

# Production Worksheet

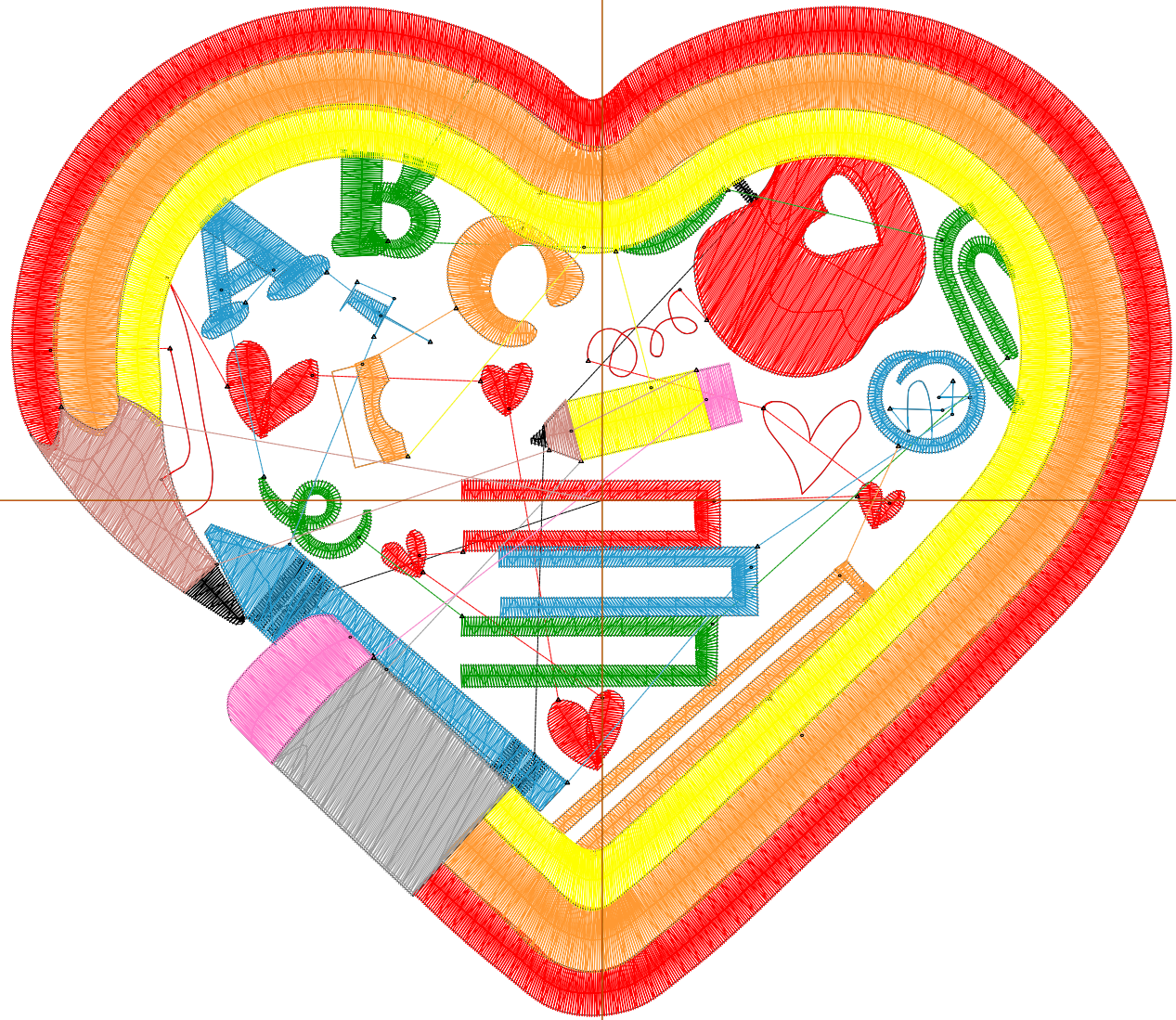
Wilcom EmbroideryStudio - Designing



Design: **6**

Title:

Stitches: 20,049  
Height: 5.67 in  
Width: 6.51 in  
Colors: 9  
Colorway: Colorway 1  
Zoom: 1:1



# Production Worksheet

Wilcom EmbroideryStudio - Designing



Design: **6**

Title:

Stitches: 20,049  
 Height: 5.67 in  
 Width: 6.51 in  
 Colors: 9  
 Colorway: Colorway 1  
 Zoom: 1:1

Machine format: Tajima  
 Color changes: 8  
 Stops: 9  
 Trims: 44  
 Appliqués: 0  
 Left: 84.2 mm  
 Right: 81.2 mm  
 Up: 70.4 mm  
 Down: 73.6 mm  
 EndX: 0.00 in  
 EndY: 0.00 in  
 Area 36.93 in<sup>2</sup>  
 Max stitch: 11.5 mm  
 Min stitch: 0.1 mm  
 Max jump: 7.0 mm  
 Total thread: 536.42ft  
 Total bobbin: 238.17ft

Stop Sequence:

#	N#	Color	St.	Code	Name	Chart
1.	8		416		R0 G0 B0	
2.	3		6,142		R255 G0 B0	
3.	1		1,667		R0 G153 B0	
4.	5		2,408		R38 G154 B204	
5.	12		4,328		R255 G153 B51	
6.	4		2,899		R255 G255 B0	
7.	9		1,062		R156 G156 B156	
8.	15		281	15	Pink	Default
9.	2		844		R207 G138 B128	